



ALS2CR11 Monoclonal Antibody

Catalog No	BYmab-12679
Isotype	IgG
Reactivity	Human;Rat;Mouse;
Applications	WB
Gene Name	ALS2CR11
Protein Name	Amyotrophic lateral sclerosis 2 chromosomal region candidate gene 11 protein
Immunogen	The antiserum was produced against synthesized peptide derived from human ALS2CR11. AA range:491-540
Specificity	ALS2CR11 Monoclonal Antibody detects endogenous levels of ALS2CR11 protein.
Formulation	Liquid in PBS containing 50% glycerol, 0.5% BSA and 0.02% sodium azide.
Source	Monoclonal, Mouse,IgG
Purification	The antibody was affinity-purified from mouse antiserum by affinity-chromatography using epitope-specific immunogen.
Dilution	WB 1:500-2000
Concentration	1 mg/ml
Purity	≥90%
Storage Stability	-20°C/1 year
Synonyms	ALS2CR11; Amyotrophic lateral sclerosis 2 chromosomal region candidate gene 11 protein
Observed Band	72kD
Cell Pathway	
Tissue Specificity	Testis,
Function	
Background	An autosomal recessive form of juvenile amyotrophic lateral sclerosis was originally mapped to a region of chromosome 2 that includes this gene. The encoded protein contains a calcium-dependent membrane targeting C2 domain. This domain is often found in proteins that are involved in membrane trafficking and signal transduction. [provided by RefSeq, Jun 2016],

Nanjing BYabscience technology Co.,Ltd

网址: www.njbybio.com

官方热线: 025-5229-8998

监督电话: 15950492658



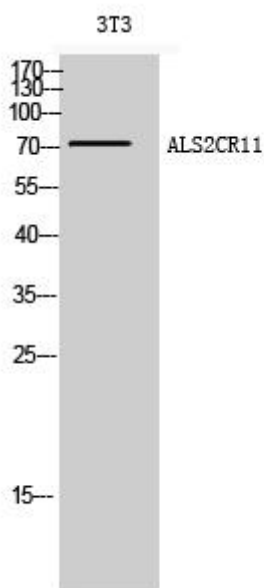
matters needing attention

Avoid repeated freezing and thawing!

Usage suggestions

This product can be used in immunological reaction related experiments. For more information, please consult technical personnel.

Products Images



Western Blot analysis of various cells using ALS2CR11 Monoclonal Antibody