



# Dab1 (phospho Tyr232) Monoclonal Antibody

<b>Catalog No</b>	BYmab-12645
<b>Isotype</b>	IgG
<b>Reactivity</b>	Human;Mouse;Rat
<b>Applications</b>	WB
<b>Gene Name</b>	DAB1
<b>Protein Name</b>	Disabled homolog 1
<b>Immunogen</b>	The antiserum was produced against synthesized peptide derived from human Dab1 around the phosphorylation site of Tyr232. AA range:199-248
<b>Specificity</b>	Phospho-Dab1 (Y232) Monoclonal Antibody detects endogenous levels of Dab1 protein only when phosphorylated at Y232.
<b>Formulation</b>	Liquid in PBS containing 50% glycerol, 0.5% BSA and 0.02% sodium azide.
<b>Source</b>	Monoclonal, Mouse,IgG
<b>Purification</b>	The antibody was affinity-purified from mouse antiserum by affinity-chromatography using epitope-specific immunogen.
<b>Dilution</b>	WB 1:500-2000
<b>Concentration</b>	1 mg/ml
<b>Purity</b>	≥90%
<b>Storage Stability</b>	-20°C/1 year
<b>Synonyms</b>	DAB1; Disabled homolog 1
<b>Observed Band</b>	80kD
<b>Cell Pathway</b>	nucleolus,microtubule organizing center,cytosol,brush border,postsynaptic density,membrane,neuron projection,neuronal cell body,intracellular membrane-bounded organelle,apical part of cell,perinuclear region of cytoplasm,
<b>Tissue Specificity</b>	Mainly expressed in brain.
<b>Function</b>	domain:The PID domain specifically binds to the Asn-Pro-Xaa-Tyr(P) motif found in many tyrosine-phosphorylated proteins.,function:Adapter molecule functioning in neural development. May regulate SIAH1 activity.,PTM:Phosphorylated on Tyr-198 and Tyr-220 upon reelin induction in embryonic neurons (By similarity). Also phosphorylated on Ser-524 independently of reelin signaling.,similarity:Contains 1 PID domain.,subunit:Associates with the SH2 domains of SRC, FYN and ABL. Interacts with DAB2IP and SIAH1 (By similarity). Interacts with LRP1.,

**Nanjing BYabscience technology Co.,Ltd**



## Background

The laminar organization of multiple neuronal types in the cerebral cortex is required for normal cognitive function. In mice, the disabled-1 gene plays a central role in brain development, directing the migration of cortical neurons past previously formed neurons to reach their proper layer. This gene is similar to disabled-1, and the protein encoded by this gene is thought to be a signal transducer that interacts with protein kinase pathways to regulate neuronal positioning in the developing brain. Alternatively spliced transcript variants of this gene have been reported, but their full length nature has not been determined. [provided by RefSeq, Jul 2008],

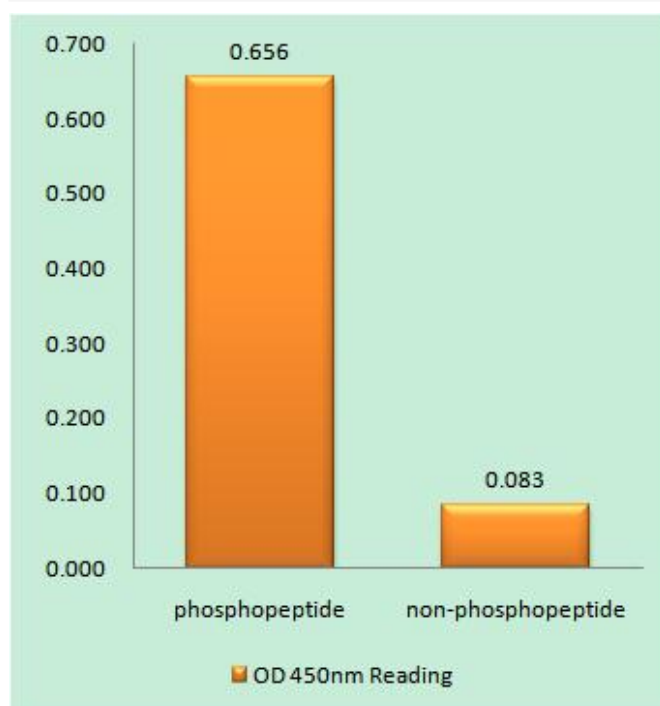
## matters needing attention

Avoid repeated freezing and thawing!

## Usage suggestions

This product can be used in immunological reaction related experiments. For more information, please consult technical personnel.

## Products Images



Western Blot analysis of various cells using Dab1 (phospho Tyr232) Monoclonal Antibody

Nanjing BYabscience technology Co.,Ltd

网址: [www.njbybio.com](http://www.njbybio.com)

官方热线: 025-5229-8998

监督电话: 15950492658