



EAAT2 Monoclonal Antibody

Catalog No	BYmab-12632
Isotype	IgG
Reactivity	Human;Rat;Mouse
Applications	WB
Gene Name	SLC1A2
Protein Name	Excitatory amino acid transporter 2 (Glutamate/aspartate transporter II) (Sodium-dependent glutamate/aspartate transporter 2) (Solute carrier family 1 member 2)
Immunogen	Synthetic Peptide of EAAT2 AA range: 370-420
Specificity	EAAT2 protein(A223) detects endogenous levels of EAAT2
Formulation	Liquid in PBS containing 50% glycerol, 0.5% BSA and 0.02% sodium azide.
Source	Monoclonal, Mouse,IgG
Purification	The antibody was affinity-purified from mouse antiserum by affinity-chromatography using epitope-specific immunogen.
Dilution	WB 1:500-2000
Concentration	1 mg/ml
Purity	≥90%
Storage Stability	-20°C/1 year
Synonyms	Excitatory amino acid transporter 2 (Glutamate/aspartate transporter II) (Sodium-dependent glutamate/aspartate transporter 2) (Solute carrier family 1 member 2)
Observed Band	62kD
Cell Pathway	Cell membrane ; Multi-pass membrane protein .
Tissue Specificity	Brain,Brain cortex,Pancreas,
Function	function:Transports L-glutamate and also L- and D-aspartate. Essential for terminating the postsynaptic action of glutamate by rapidly removing released glutamate from the synaptic cleft. Acts as a symport by cotransporting sodium.,PTM:Glycosylated.,similarity:Belongs to the sodium:dicarboxylate (SDF) symporter (TC 2.A.23) family.,subunit:Homotrimer. Interacts with JUB.,
Background	This gene encodes a member of a family of solute transporter proteins. The membrane-bound protein is the principal transporter that clears the excitatory neurotransmitter glutamate from the extracellular space at synapses in the central

Nanjing BYabscience technology Co.,Ltd



nervous system. Glutamate clearance is necessary for proper synaptic activation and to prevent neuronal damage from excessive activation of glutamate receptors. Mutations in and decreased expression of this protein are associated with amyotrophic lateral sclerosis. Alternatively spliced transcript variants of this gene have been identified. [provided by RefSeq, Sep 2010],

matters needing attention

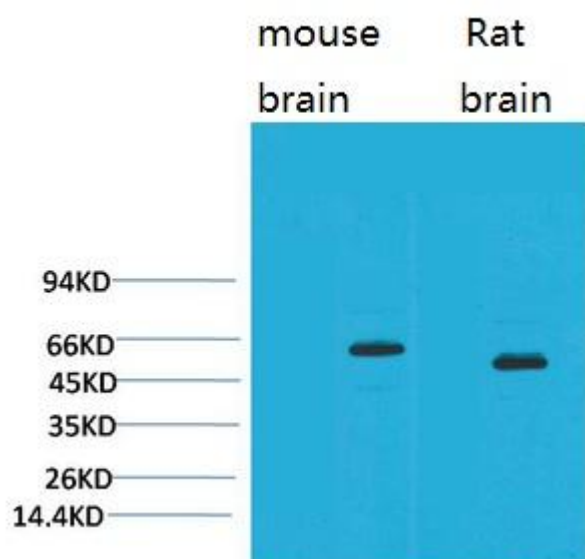
Avoid repeated freezing and thawing!

Usage suggestions

This product can be used in immunological reaction related experiments. For more information, please consult technical personnel.

Products Images

Western Blot analysis of various cells using EAAT2 Monoclonal Antibody



Nanjing BYabs science technology Co.,Ltd

网址: www.njbybio.com

官方热线: 025-5229-8998

监督电话: 15950492658