



USF1 mouse mAb

| | |
|--------------------|--|
| Catalog No | BYmab-12548 |
| Isotype | IgG |
| Reactivity | Human; Mouse;Rat |
| Applications | WB |
| Gene Name | USF1 BHLHB11 USF |
| Protein Name | USF1 |
| Immunogen | Synthesized peptide derived from human USF1 |
| Specificity | This antibody detects endogenous levels of USF1 at Human, Mouse,Rat |
| Formulation | Liquid in PBS containing 50% glycerol, and 0.36% sodium azide. |
| Source | Monoclonal, Mouse,IgG |
| Purification | The antibody was affinity-purified from mouse antiserum by affinity-chromatography using epitope-specific immunogen. |
| Dilution | WB 1:500-2000 |
| Concentration | 1 mg/ml |
| Purity | ≥90% |
| Storage Stability | -20°C/1 year |
| Synonyms | Upstream stimulatory factor 1 (Class B basic helix-loop-helix protein 11) (bHLHb11) (Major late transcription factor 1) |
| Observed Band | |
| Cell Pathway | Nucleus. |
| Tissue Specificity | Kidney, |
| Function | disease:Genetic variations in USF1 are associated with combined hyperlipidemia type 1 (HYPLIP1) [MIM:602491]; also known as familial combined hyperlipidemia type 1 (FCHL1). HYPLIP1 is characterized by elevated levels of serum total cholesterol, triglycerides or both, and is observed in about 20% of individuals with premature coronary heart disease.,function:Transcription factor that binds to a symmetrical DNA sequence (E-boxes) (5'-CACGTG-3') that is found in a variety of viral and cellular promoters.,similarity:Contains 1 basic helix-loop-helix (bHLH) domain.,subunit:Efficient DNA binding requires dimerization with another bHLH protein. Binds DNA as an homodimer or a heterodimer (USF1/USF2). Interacts with varicella-zoster virus IE62 protein., |

Nanjing BYabscience technology Co.,Ltd



Background

This gene encodes a member of the basic helix-loop-helix leucine zipper family, and can function as a cellular transcription factor. The encoded protein can activate transcription through pyrimidine-rich initiator (Inr) elements and E-box motifs. This gene has been linked to familial combined hyperlipidemia (FCHL). Alternative splicing of this gene results in multiple transcript variants. A related pseudogene has been defined on chromosome 21. [provided by RefSeq, Feb 2013],

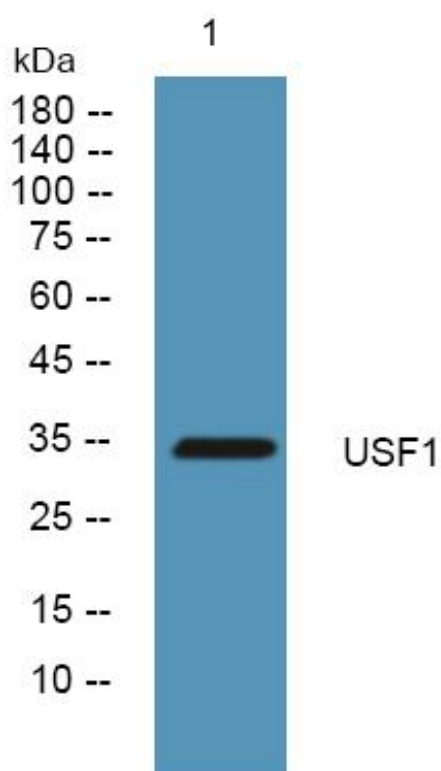
matters needing attention

Avoid repeated freezing and thawing!

Usage suggestions

This product can be used in immunological reaction related experiments. For more information, please consult technical personnel.

Products Images



Western Blot analysis of various cells using USF1 mouse mAb