



GSDME C-terminal mouse mAb

Catalog No	BYmab-12521
Isotype	IgG
Reactivity	Human;Mouse;Rat
Applications	WB
Gene Name	GSDME
Protein Name	Gasdermin-E,DFNA5,Dfna5h,EG14210,2310037D07Rik .4932441K13Rik ,ICERE 1,ICERE-1,Deafness, autosomal dominant 5,Non-syndromic hearing impairment protein 5,GSDME-CT
Immunogen	Synthesized peptide derived from human GSDME. AA range:400-496
Specificity	The antibody detects endogenous full length and c-terminal fragment of gsdme protein,
Formulation	Liquid in PBS containing 50% glycerol, and 0.02% sodium azide.
Source	Monoclonal, Mouse,IgG
Purification	The antibody was affinity-purified from mouse antiserum by affinity-chromatography using epitope-specific immunogen.
Dilution	WB 1:500-2000
Concentration	1 mg/ml
Purity	≥90%
Storage Stability	-20°C/1 year
Synonyms	
Observed Band	55 25kD
Cell Pathway	[Gasdermin-E, N-terminal]: Cell membrane ; Multi-pass membrane protein .; [Gasdermin-E]: Cytoplasm, cytosol .
Tissue Specificity	Expressed in cochlea (PubMed:9771715). Low level of expression in heart, brain, placenta, lung, liver, skeletal muscle, kidney and pancreas, with highest expression in placenta (PubMed:9771715).
Function	Cleavage at Asp-270 by CASP3 (mature and uncleaved precursor forms) or granzyme B (GZMB) relieves autoinhibition and is sufficient to initiate pyroptosis.
Background	
matters needing attention	Avoid repeated freezing and thawing!

Nanjing BYabscience technology Co.,Ltd

网址: www.njbybio.com

官方热线: 025-5229-8998

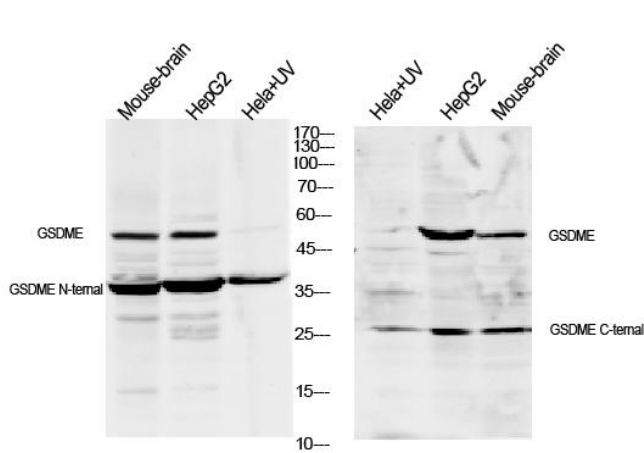
监督电话: 15950492658



Usage suggestions

This product can be used in immunological reaction related experiments. For more information, please consult technical personnel.

Products Images



Western Blot analysis of various cells using GSDME C-terminal mouse mAb