



# GDPD1 mouse mAb

<b>Catalog No</b>	BYmab-12404
<b>Isotype</b>	IgG
<b>Reactivity</b>	Human; Mouse;Rat
<b>Applications</b>	WB
<b>Gene Name</b>	GDPD1 GDE4
<b>Protein Name</b>	GDPD1
<b>Immunogen</b>	Synthesized peptide derived from human GDPD1 AA range: 247-297
<b>Specificity</b>	This antibody detects endogenous levels of GDPD1 at Human/Mouse/Rat
<b>Formulation</b>	Liquid in PBS containing 50% glycerol, 0.5% BSA and 0.02% sodium azide.
<b>Source</b>	Monoclonal, Mouse,IgG
<b>Purification</b>	The antibody was affinity-purified from mouse antiserum by affinity-chromatography using epitope-specific immunogen.
<b>Dilution</b>	WB 1:500-2000
<b>Concentration</b>	1 mg/ml
<b>Purity</b>	≥90%
<b>Storage Stability</b>	-20°C/1 year
<b>Synonyms</b>	
<b>Observed Band</b>	
<b>Cell Pathway</b>	Cytoplasm . Membrane ; Multi-pass membrane protein . Cytoplasm, perinuclear region . Endoplasmic reticulum . Concentrated at the perinuclear region and the cell periphery (PubMed:18991142). .
<b>Tissue Specificity</b>	Widely expressed with high expression level in testis.
<b>Function</b>	similarity:Belongs to the glycerophosphoryl diester phosphodiesterase family.,similarity:Contains 1 GDPD domain.,tissue specificity:Detected in placenta, liver, kidney, pancreas, spleen, thymus, ovary, small intestine and peripheral blood leukocytes.,
<b>Background</b>	This gene encodes a member of the glycerophosphodiester phosphodiesterase family of enzymes that catalyze the hydrolysis of deacylated glycerophospholipids to glycerol phosphate and alcohol. The encoded protein is localized to the cytoplasm and concentrates near the perinuclear region. Alternative splicing results in multiple transcript variants. [provided by RefSeq, Oct 2009],

**Nanjing BYabscience technology Co.,Ltd**



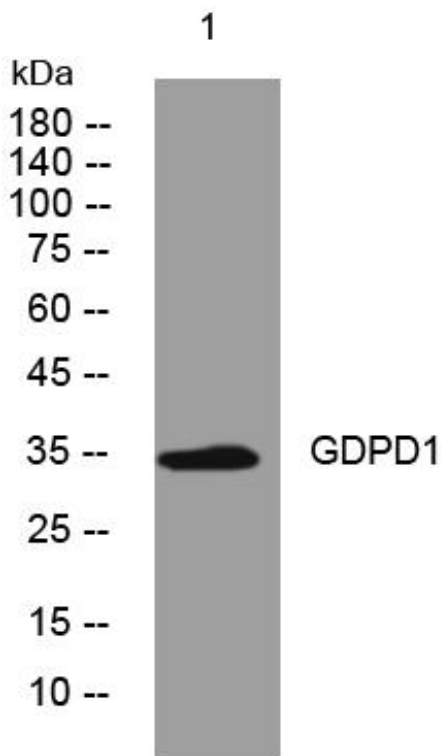
**matters needing attention**

Avoid repeated freezing and thawing!

**Usage suggestions**

This product can be used in immunological reaction related experiments. For more information, please consult technical personnel.

## Products Images



Western Blot analysis of various cells using GDPD1 mouse mAb

Nanjing BYabscience technology Co.,Ltd

网址: [www.njbybio.com](http://www.njbybio.com)

官方热线: 025-5229-8998

监督电话: 15950492658