



GRPE2 mouse mAb

Catalog No	BYmab-12402
Isotype	IgG
Reactivity	Human; Mouse
Applications	WB
Gene Name	GRPEL2
Protein Name	GRPE2
Immunogen	Synthesized peptide derived from human GRPE2 AA range: 42-92
Specificity	This antibody detects endogenous levels of GRPE2 at Human/Mouse
Formulation	Liquid in PBS containing 50% glycerol, 0.5% BSA and 0.02% sodium azide.
Source	Monoclonal, Mouse,IgG
Purification	The antibody was affinity-purified from mouse antiserum by affinity-chromatography using epitope-specific immunogen.
Dilution	WB 1:500-2000
Concentration	1 mg/ml
Purity	≥90%
Storage Stability	-20°C/1 year
Synonyms	
Observed Band	
Cell Pathway	Mitochondrion matrix .
Tissue Specificity	
Function	function:Essential component of the PAM complex, a complex required for the translocation of transit peptide-containing proteins from the inner membrane into the mitochondrial matrix in an ATP-dependent manner.,function:Essential component of the PAM complex, a complex required for the translocation of transit peptide-containing proteins from the inner membrane into the mitochondrial matrix in an ATP-dependent manner. Seems to control the nucleotide-dependent binding of mitochondrial HSP70 to substrate proteins. Stimulates ATPase activity of mt-HSP70. May also serve to modulate the interconversion of oligomeric (inactive) and monomeric (active) forms of mt-HSP70.,similarity:Belongs to the grpE family.,subunit:Probable component of the PAM complex at least composed of a mitochondrial HSP70 protein, GRPEL1 or GRPEL2, TIMM44, TIMM16/MAGMAS and TIMM14/DNAJC19.,

Nanjing BYabscience technology Co.,Ltd



Background

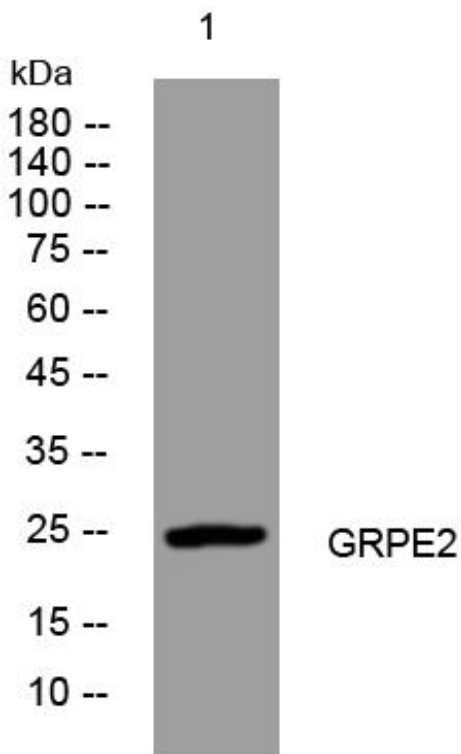
matters needing attention

Avoid repeated freezing and thawing!

Usage suggestions

This product can be used in immunological reaction related experiments. For more information, please consult technical personnel.

Products Images



Western Blot analysis of various cells using GRPE2 mouse mAb