



# ACBG1 mouse mAb

<b>Catalog No</b>	BYmab-12398
<b>Isotype</b>	IgG
<b>Reactivity</b>	Human; Mouse;Rat
<b>Applications</b>	WB
<b>Gene Name</b>	ACSBG1 BGM KIAA0631 LPD
<b>Protein Name</b>	ACBG1
<b>Immunogen</b>	Synthesized peptide derived from human ACBG1 AA range: 496-546
<b>Specificity</b>	This antibody detects endogenous levels of ACBG1 at Human/Mouse/Rat
<b>Formulation</b>	Liquid in PBS containing 50% glycerol, 0.5% BSA and 0.02% sodium azide.
<b>Source</b>	Monoclonal, Mouse,IgG
<b>Purification</b>	The antibody was affinity-purified from mouse antiserum by affinity-chromatography using epitope-specific immunogen.
<b>Dilution</b>	WB 1:500-2000
<b>Concentration</b>	1 mg/ml
<b>Purity</b>	≥90%
<b>Storage Stability</b>	-20°C/1 year
<b>Synonyms</b>	
<b>Observed Band</b>	
<b>Cell Pathway</b>	Cytoplasm . Cytoplasmic vesicle . Microsome . Endoplasmic reticulum . Cell membrane .
<b>Tissue Specificity</b>	Expressed primarily in brain. Expressed at lower level in testis and adrenal gland. Present in all regions of brain except pituitary.
<b>Function</b>	catalytic activity:ATP + a long-chain carboxylic acid + CoA = AMP + diphosphate + an acyl-CoA.;function:Mediates activation of long-chain fatty acids for both synthesis of cellular lipids, and degradation via beta-oxidation. Able to activate long-chain fatty acids. Also able to activate very long-chain fatty acids; however, the relevance of such activity is unclear in vivo. Can activate diverse saturated, monosaturated and polyunsaturated fatty acids.;similarity:Belongs to the ATP-dependent AMP-binding enzyme family. Bubblegum subfamily.;tissue specificity:Expressed primarily in brain. Expressed at lower level in testis and adrenal gland. Present in all regions of brain except pituitary.,
<b>Background</b>	The protein encoded by this gene possesses long-chain acyl-CoA synthetase activity. It is thought to play a central role in brain very long-chain fatty acids

**Nanjing BYabscience technology Co.,Ltd**



metabolism and myelinogenesis. [provided by RefSeq, Jul 2008],

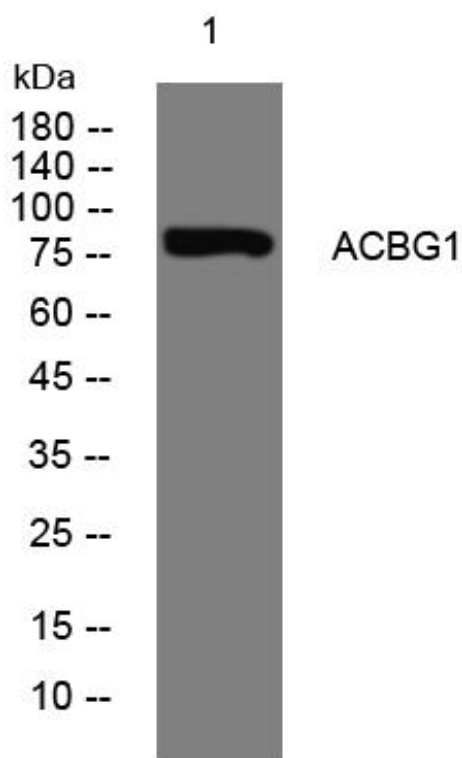
**matters needing attention**

Avoid repeated freezing and thawing!

**Usage suggestions**

This product can be used in immunological reaction related experiments. For more information, please consult technical personnel.

## Products Images



Western Blot analysis of various cells using ACBG1 mouse mAb