



# CMBL mouse mAb

Catalog No	BYmab-12393
Isotype	IgG
Reactivity	Human; Mouse;Rat
Applications	WB
Gene Name	CMBL
Protein Name	CMBL
Immunogen	Synthesized peptide derived from human CMBL AA range: 136-186
Specificity	This antibody detects endogenous levels of CMBL at Human/Mouse/Rat
Formulation	Liquid in PBS containing 50% glycerol, 0.5% BSA and 0.02% sodium azide.
Source	Monoclonal, Mouse,IgG
Purification	The antibody was affinity-purified from mouse antiserum by affinity-chromatography using epitope-specific immunogen.
Dilution	WB 1:500-2000
Concentration	1 mg/ml
Purity	≥90%
Storage Stability	-20°C/1 year
Synonyms	
Observed Band	
Cell Pathway	Cytoplasm, cytosol .
Tissue Specificity	Widely expressed, with highest levels in liver, followed by kidney, small intestine and colon. Present in liver and intestine (at protein level).
Function	similarity:Belongs to the dienelactone hydrolase family.,
Background	CMBL (EC 3.1.1.45) is a cysteine hydrolase of the dienelactone hydrolase family that is highly expressed in liver cytosol. CMBL preferentially cleaves cyclic esters, and it activates medoxomil-ester prodrugs in which the medoxomil moiety is linked to an oxygen atom (Ishizuka et al., 2010 [PubMed 20177059]).[supplied by OMIM, Apr 2010],
matters needing attention	Avoid repeated freezing and thawing!

Nanjing BYabscience technology Co.,Ltd

网址: [www.njbybio.com](http://www.njbybio.com)

官方热线: 025-5229-8998

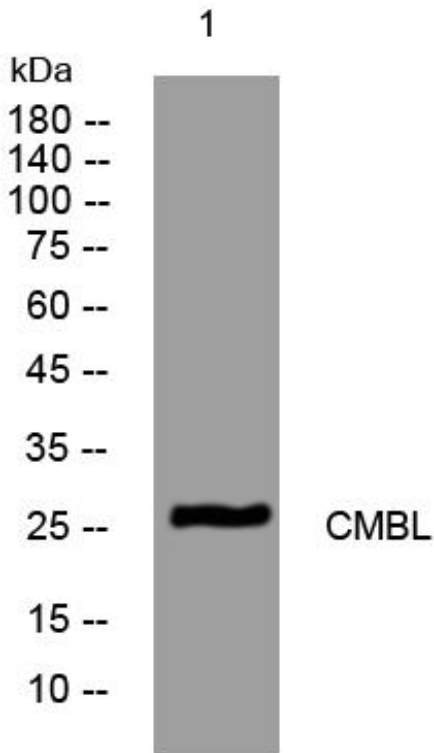
监督电话: 15950492658



### Usage suggestions

This product can be used in immunological reaction related experiments. For more information, please consult technical personnel.

## Products Images



Western Blot analysis of various cells using CMBL mouse mAb

Nanjing BYabscience technology Co.,Ltd

网址: [www.njbybio.com](http://www.njbybio.com)

官方热线: 025-5229-8998

监督电话: 15950492658