



# MYCT mouse mAb

Catalog No	BYmab-12391
Isotype	IgG
Reactivity	Human; Mouse;Rat
Applications	WB
Gene Name	SLC2A13
Protein Name	MYCT
Immunogen	Synthesized peptide derived from human MYCT AA range: 352-402
Specificity	This antibody detects endogenous levels of MYCT at Human/Mouse/Rat
Formulation	Liquid in PBS containing 50% glycerol, 0.5% BSA and 0.02% sodium azide.
Source	Monoclonal, Mouse,IgG
Purification	The antibody was affinity-purified from mouse antiserum by affinity-chromatography using epitope-specific immunogen.
Dilution	WB 1:500-2000
Concentration	1 mg/ml
Purity	≥90%
Storage Stability	-20°C/1 year
Synonyms	
Observed Band	
Cell Pathway	Cell membrane ; Multi-pass membrane protein .
Tissue Specificity	Predominantly expressed in the brain.
Function	function:H(+)-myo-inositol cotransporter. Can also transport related stereoisomers.,PTM:Glycosylated.,similarity:Belongs to the major facilitator superfamily. Sugar transporter (TC 2.A.1.1) family.,tissue specificity:Predominantly expressed in the brain.,
Background	
matters needing attention	Avoid repeated freezing and thawing!

Nanjing BYabscience technology Co.,Ltd

网址: [www.njbybio.com](http://www.njbybio.com)

官方热线: 025-5229-8998

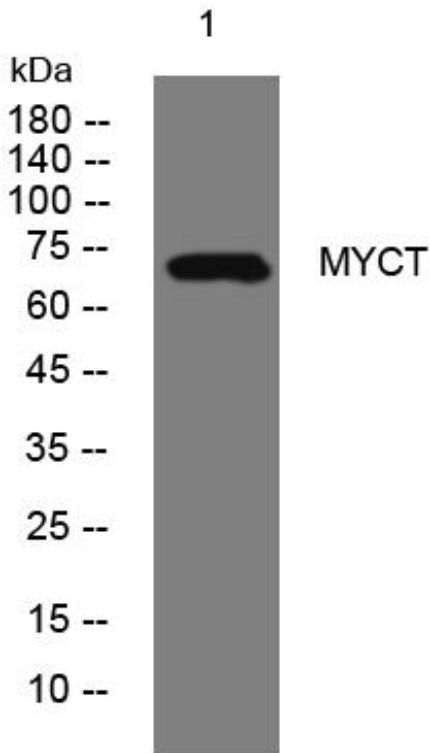
监督电话: 15950492658



### Usage suggestions

This product can be used in immunological reaction related experiments. For more information, please consult technical personnel.

## Products Images



Western Blot analysis of various cells using MYCT mouse mAb

Nanjing BYabs science technology Co.,Ltd

网址: [www.njbybio.com](http://www.njbybio.com)

官方热线: 025-5229-8998

监督电话: 15950492658