



SMHD1 mouse mAb

Catalog No	BYmab-12388
Isotype	IgG
Reactivity	Human; Mouse
Applications	WB
Gene Name	SMCHD1 KIAA0650
Protein Name	SMHD1
Immunogen	Synthesized peptide derived from human SMHD1 AA range: 1480-1530
Specificity	This antibody detects endogenous levels of SMHD1 at Human/Mouse
Formulation	Liquid in PBS containing 50% glycerol, 0.5% BSA and 0.02% sodium azide.
Source	Monoclonal, Mouse,IgG
Purification	The antibody was affinity-purified from mouse antiserum by affinity-chromatography using epitope-specific immunogen.
Dilution	WB 1:500-2000
Concentration	1 mg/ml
Purity	≥90%
Storage Stability	-20°C/1 year
Synonyms	
Observed Band	
Cell Pathway	Chromosome . Recruited to inactivated chromosome X in females by Xist RNA (By similarity). Localizes at sites of DNA damage at double-strand breaks (DSBs) (PubMed:25294876, PubMed:24790221). .
Tissue Specificity	
Function	
Background	This gene encodes a protein which contains a hinge region domain found in members of the SMC (structural maintenance of chromosomes) protein family. [provided by RefSeq, Dec 2011],
matters needing attention	Avoid repeated freezing and thawing!

Nanjing BYabscience technology Co.,Ltd

网址: www.njbybio.com

官方热线: 025-5229-8998

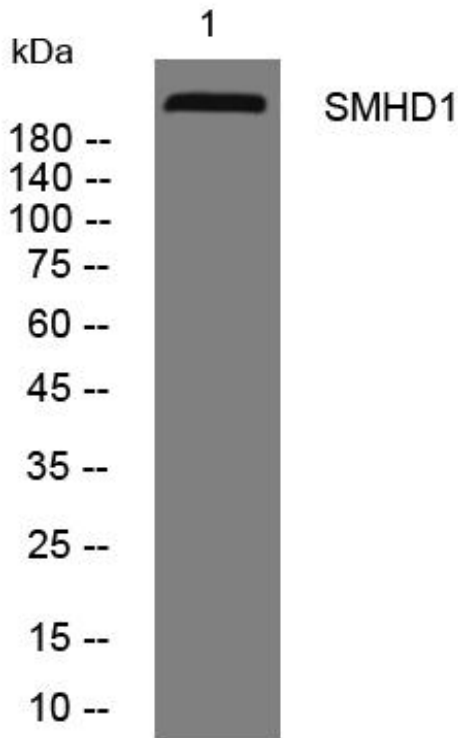
监督电话: 15950492658



Usage suggestions

This product can be used in immunological reaction related experiments. For more information, please consult technical personnel.

Products Images



Nanjing BYabs science technology Co.,Ltd

网址: www.njbybio.com

官方热线: 025-5229-8998

监督电话: 15950492658