



# STXB2 mouse mAb

<b>Catalog No</b>	BYmab-12387
<b>Isotype</b>	IgG
<b>Reactivity</b>	Human; Mouse;Rat
<b>Applications</b>	WB
<b>Gene Name</b>	STXBP2 UNC18B
<b>Protein Name</b>	STXB2
<b>Immunogen</b>	Synthesized peptide derived from human STXB2 AA range: 392-442
<b>Specificity</b>	This antibody detects endogenous levels of STXB2 at Human/Mouse/Rat
<b>Formulation</b>	Liquid in PBS containing 50% glycerol, 0.5% BSA and 0.02% sodium azide.
<b>Source</b>	Monoclonal, Mouse,IgG
<b>Purification</b>	The antibody was affinity-purified from mouse antiserum by affinity-chromatography using epitope-specific immunogen.
<b>Dilution</b>	WB 1:500-2000
<b>Concentration</b>	1 mg/ml
<b>Purity</b>	≥90%
<b>Storage Stability</b>	-20°C/1 year
<b>Synonyms</b>	
<b>Observed Band</b>	
<b>Cell Pathway</b>	cytosol,plasma membrane,integral component of membrane,apical plasma membrane,SNARE complex,specific granule,azurophil granule,zymogen granule membrane,cytolytic granule,extracellular exosome,tertiary granule,
<b>Tissue Specificity</b>	Placenta, lung, liver, kidney and pancreas, as well as in peripheral blood lymphocytes.
<b>Function</b>	function:Involved in the protein trafficking from the Golgi apparatus to the plasma membrane.,similarity:Belongs to the STXBP/unc-18/SEC1 family.,subunit:Bounds syntaxins 1A, 2, 3 but not 4.,tissue specificity:Placenta, lung, liver, kidney and pancreas, as well as in peripheral blood lymphocytes.,
<b>Background</b>	This gene encodes a member of the STXBP/unc-18/SEC1 family. The encoded protein is involved in intracellular trafficking, control of SNARE (soluble NSF attachment protein receptor) complex assembly, and the release of cytotoxic granules by natural killer cells. Mutations in this gene are associated with familial hemophagocytic lymphohistiocytosis. Alternatively spliced transcript variants encoding different isoforms have been noted for this gene. [provided by RefSeq,

**Nanjing BYabscience technology Co.,Ltd**



Jan 2013],

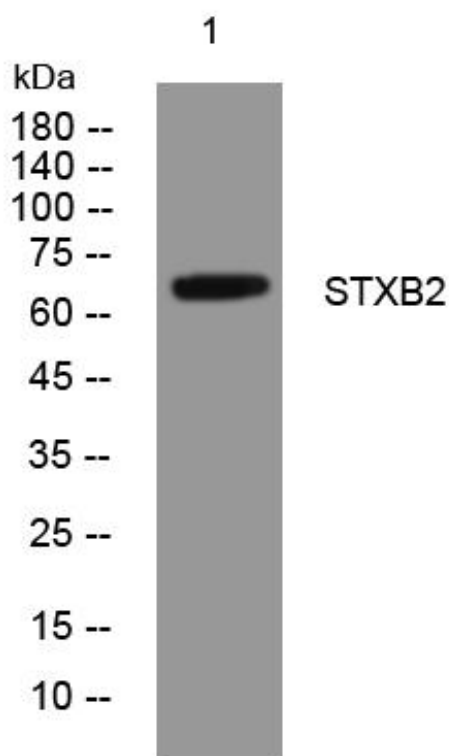
**matters needing attention**

Avoid repeated freezing and thawing!

**Usage suggestions**

This product can be used in immunological reaction related experiments. For more information, please consult technical personnel.

## Products Images



Western Blot analysis of various cells using STXB2 mouse mAb

Nanjing BYabs science technology Co.,Ltd

网址: [www.njbybio.com](http://www.njbybio.com)

官方热线: 025-5229-8998

监督电话: 15950492658