



SKDA1 mouse mAb

Catalog No	BYmab-12385
Isotype	IgG
Reactivity	Human; Mouse
Applications	WB
Gene Name	SKIDA1 C10orf140 DLN1
Protein Name	SKDA1
Immunogen	Synthesized peptide derived from human SKDA1 AA range: 714-764
Specificity	This antibody detects endogenous levels of SKDA1 at Human/Mouse
Formulation	Liquid in PBS containing 50% glycerol, 0.5% BSA and 0.02% sodium azide.
Source	Monoclonal, Mouse,IgG
Purification	The antibody was affinity-purified from mouse antiserum by affinity-chromatography using epitope-specific immunogen.
Dilution	WB 1:500-2000
Concentration	1 mg/ml
Purity	≥90%
Storage Stability	-20°C/1 year
Synonyms	
Observed Band	
Cell Pathway	
Tissue Specificity	
Function	polymorphism:The poly-Ala region of C10orf140 is highly polymorphic and the number of Ala can vary.,similarity:Belongs to the DACH/dachshund family.,
Background	
matters needing attention	Avoid repeated freezing and thawing!
Usage suggestions	This product can be used in immunological reaction related experiments. For more information, please consult technical personnel.

Nanjing BYabscience technology Co.,Ltd

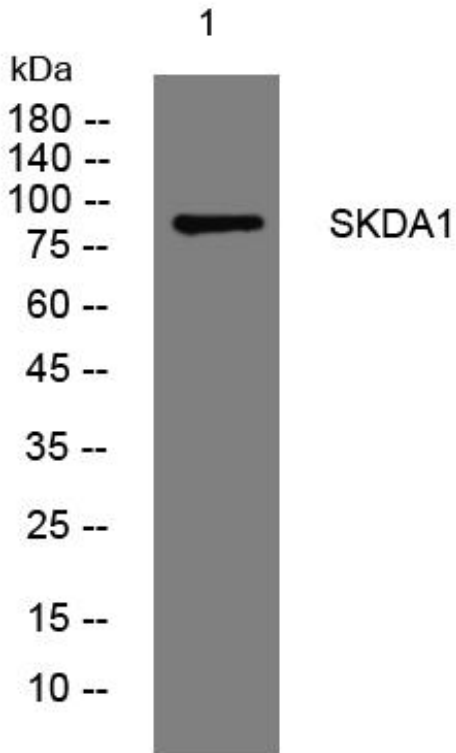
网址: www.njbybio.com

官方热线: 025-5229-8998

监督电话: 15950492658



Products Images



Western Blot analysis of various cells using SKDA1 mouse mAb