



## QCR1 mouse mAb

Catalog No	BYmab-12368
Isotype	IgG
Reactivity	Human; Mouse;Rat
Applications	WB
Gene Name	UQCRC1
Protein Name	QCR1
Immunogen	Synthesized peptide derived from human QCR1 AA range: 164-214
Specificity	This antibody detects endogenous levels of QCR1 at Human/Mouse/Rat
Formulation	Liquid in PBS containing 50% glycerol, 0.5% BSA and 0.02% sodium azide.
Source	Monoclonal, Mouse,IgG
Purification	The antibody was affinity-purified from mouse antiserum by affinity-chromatography using epitope-specific immunogen.
Dilution	WB 1:500-2000
Concentration	1 mg/ml
Purity	≥90%
Storage Stability	-20°C/1 year
Synonyms	
Observed Band	53KD
Cell Pathway	Mitochondrion inner membrane ; Peripheral membrane protein ; Matrix side .
Tissue Specificity	Expressed in brain, including substantia nigra, striatum, cortex and cerebellum, and in spinal cord, heart, kidney, liver and muscle.
Function	caution:Does not seem to have a protease activity as it lack the zinc-binding site.,function:This is a component of the ubiquinol-cytochrome c reductase complex (complex III or cytochrome b-c1 complex), which is part of the mitochondrial respiratory chain. This protein may mediate formation of the complex between cytochromes c and c1.,similarity:Belongs to the peptidase M16 family. UQCRC1/QCR1 subfamily.,subunit:The bc1 complex contains 11 subunits: 3 respiratory subunits (cytochrome b, cytochrome c1 and Rieske/UQCRFS1), 2 core proteins (UQCRC1/QCR1 and UQCRC2/QCR2) and 6 low-molecular weight proteins (UQCRH/QCR6, UQCRB/QCR7, UQCRQ/QCR8, UQCR10/QCR9, UQCR11/QCR10 and a cleavage product of Rieske/UQCRFS1).,

Nanjing BYabscience technology Co.,Ltd



## Background

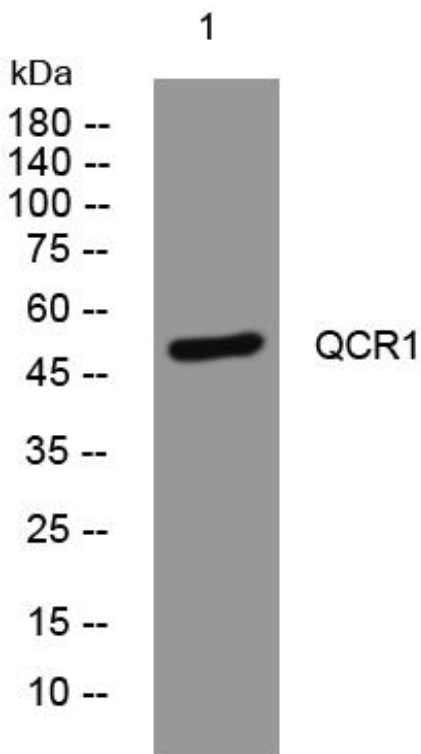
### matters needing attention

Avoid repeated freezing and thawing!

### Usage suggestions

This product can be used in immunological reaction related experiments. For more information, please consult technical personnel.

## Products Images



Western Blot analysis of various cells using QCR1 mouse mAb