



FAN1 mouse mAb

Catalog No	BYmab-12358
Isotype	IgG
Reactivity	Human; Mouse
Applications	WB
Gene Name	FAN1 KIAA1018 MTMR15
Protein Name	FAN1
Immunogen	Synthesized peptide derived from human FAN1 AA range: 801-851
Specificity	This antibody detects endogenous levels of FAN1 at Human/Mouse
Formulation	Liquid in PBS containing 50% glycerol, 0.5% BSA and 0.02% sodium azide.
Source	Monoclonal, Mouse,IgG
Purification	The antibody was affinity-purified from mouse antiserum by affinity-chromatography using epitope-specific immunogen.
Dilution	WB 1:500-2000
Concentration	1 mg/ml
Purity	≥90%
Storage Stability	-20°C/1 year
Synonyms	
Observed Band	
Cell Pathway	Nucleus . Localizes at sites of DNA damage following recruitment by monoubiquitinated FANCD2 (PubMed:20603015, PubMed:20603016). Localizes to stalled replication forks via its UBZ4-type zinc finger (PubMed:20935496). .
Tissue Specificity	
Function	similarity:Belongs to the MTMR15 family.,
Background	This gene plays a role in DNA interstrand cross-link repair and encodes a protein with 5' flap endonuclease and 3' exonuclease activity. Mutations in this gene cause karyomegalic interstitial nephritis. Alternatively spliced transcript variants encoding distinct isoforms have been described. [provided by RefSeq, Feb 2016],
matters needing attention	Avoid repeated freezing and thawing!

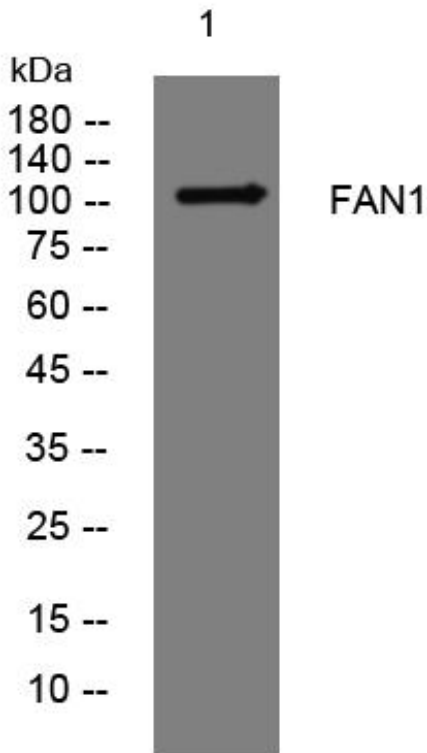
Nanjing BYabscience technology Co.,Ltd



Usage suggestions

This product can be used in immunological reaction related experiments. For more information, please consult technical personnel.

Products Images



Western Blot analysis of various cells using FAN1 mouse mAb

Nanjing BYabs science technology Co.,Ltd

网址: www.njbybio.com

官方热线: 025-5229-8998

监督电话: 15950492658