

# HRG1 mouse mAb

Catalog No	BYmab-12344
Isotype	IgG
Reactivity	Human; Mouse;Rat
Applications	WB
Gene Name	SLC48A1 HRG1
Protein Name	HRG1
Immunogen	Synthesized peptide derived from human HRG1 AA range: 28-78
Specificity	This antibody detects endogenous levels of HRG1 at Human/Mouse/Rat
Formulation	Liquid in PBS containing 50% glycerol, 0.5% BSA and 0.02% sodium azide.
Source	Monoclonal, Mouse,IgG
Purification	The antibody was affinity-purified from mouse antiserum by affinity-chromatography using epitope-specific immunogen.
Dilution	WB 1:500-2000
Concentration	1 mg/ml
Purity	≥90%
Storage Stability	-20°C/1 year
Synonyms	
Observed Band	
Cell Pathway	Endosome membrane ; Multi-pass membrane protein . Lysosome membrane ; Multi-pass membrane protein .
Tissue Specificity	Highly expressed in the brain, kidney, heart and skeletal muscle. Moderately expressed in the liver, lung, placenta and small intestine.
Function	function:Heme transporter that regulates intracellular heme availability through the endosomal or lysosomal compartment.,sequence caution:Wrong choice of CDS.,similarity:Belongs to the HRG family.,tissue specificity:highly expressed in the brain, kidney, heart and skeletal muscle. Moderately expressed in the liver, lung, placenta and small intestine.,
Background	
matters needing attention	Avoid repeated freezing and thawing!

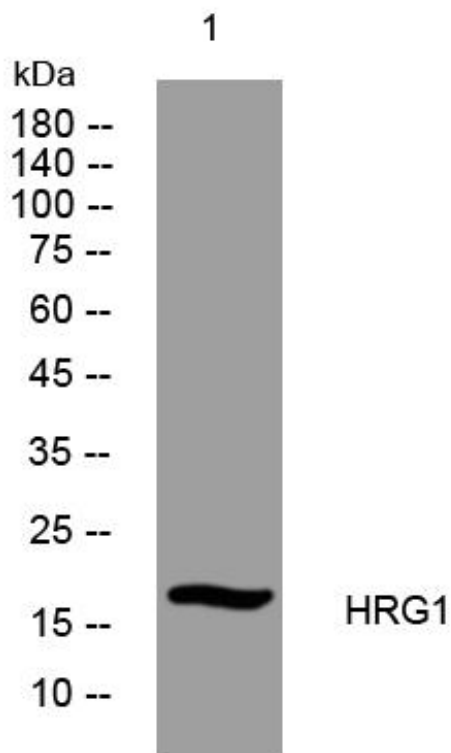
Nanjing BYabscience technology Co.,Ltd



### Usage suggestions

This product can be used in immunological reaction related experiments. For more information, please consult technical personnel.

## Products Images



Western Blot analysis of various cells using HRG1 mouse mAb

Nanjing BYabs science technology Co.,Ltd

网址: [www.njbybio.com](http://www.njbybio.com)

官方热线: 025-5229-8998

监督电话: 15950492658