



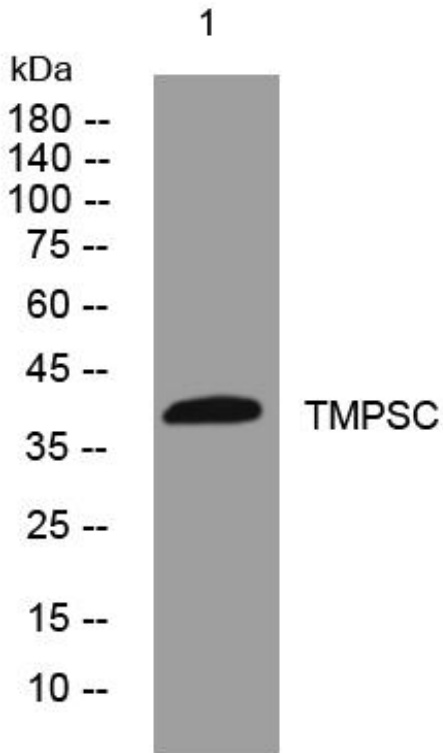
# TMPSC mouse mAb

Catalog No	BYmab-12340
Isotype	IgG
Reactivity	Human; Mouse
Applications	WB
Gene Name	TMPRSS12
Protein Name	TMPSC
Immunogen	Synthesized peptide derived from human TMPSC AA range: 185-235
Specificity	This antibody detects endogenous levels of TMPSC at Human/Mouse
Formulation	Liquid in PBS containing 50% glycerol, 0.5% BSA and 0.02% sodium azide.
Source	Monoclonal, Mouse,IgG
Purification	The antibody was affinity-purified from mouse antiserum by affinity-chromatography using epitope-specific immunogen.
Dilution	WB 1:500-2000
Concentration	1 mg/ml
Purity	≥90%
Storage Stability	-20°C/1 year
Synonyms	
Observed Band	
Cell Pathway	Membrane ; Single-pass membrane protein .
Tissue Specificity	In testis, expressed in spermatocytes and spermatids. Expressed in colorectal cancer (at protein level).
Function	similarity:Belongs to the peptidase S1 family.,similarity:Contains 1 peptidase S1 domain.,
Background	
matters needing attention	Avoid repeated freezing and thawing!
Usage suggestions	This product can be used in immunological reaction related experiments. For more information, please consult technical personnel.

Nanjing BYabscience technology Co.,Ltd



## Products Images



Western Blot analysis of various cells using TMPSC mouse mAb