



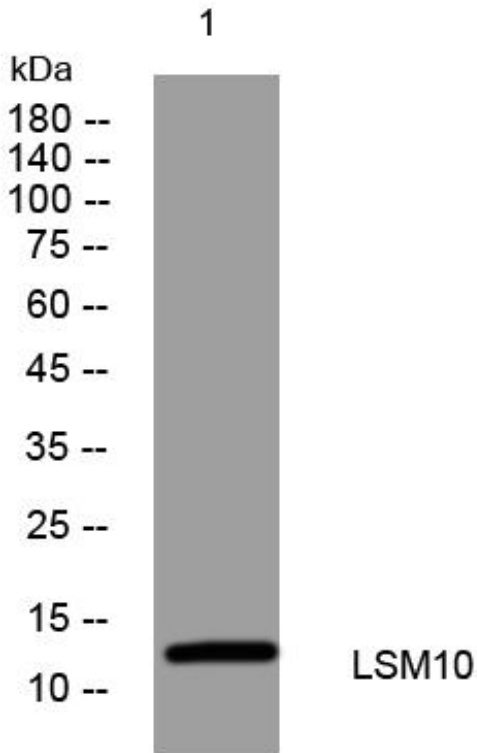
LSM10 mouse mAb

Catalog No	BYmab-12305
Isotype	IgG
Reactivity	Human; Mouse
Applications	WB
Gene Name	LSM10
Protein Name	LSM10
Immunogen	Synthesized peptide derived from human LSM10 AA range: 73-123
Specificity	This antibody detects endogenous levels of LSM10 at Human/Mouse
Formulation	Liquid in PBS containing 50% glycerol, 0.5% BSA and 0.02% sodium azide.
Source	Monoclonal, Mouse,IgG
Purification	The antibody was affinity-purified from mouse antiserum by affinity-chromatography using epitope-specific immunogen.
Dilution	WB 1:500-2000
Concentration	1 mg/ml
Purity	≥90%
Storage Stability	-20°C/1 year
Synonyms	
Observed Band	
Cell Pathway	Nucleus .
Tissue Specificity	
Function	function: Binds specifically to U7 snRNA.,similarity: Belongs to the snRNP Sm proteins family.,
Background	
matters needing attention	Avoid repeated freezing and thawing!
Usage suggestions	This product can be used in immunological reaction related experiments. For more information, please consult technical personnel.

Nanjing BYabscience technology Co.,Ltd



Products Images



Western Blot analysis of various cells using LSM10 mouse mAb