



NISCH mouse mAb

Catalog No	BYmab-12301
Isotype	IgG
Reactivity	Human; Mouse;Rat
Applications	WB
Gene Name	NISCH IRAS KIAA0975
Protein Name	NISCH
Immunogen	Synthesized peptide derived from human NISCH AA range: 234-284
Specificity	This antibody detects endogenous levels of NISCH at Human/Mouse/Rat
Formulation	Liquid in PBS containing 50% glycerol, 0.5% BSA and 0.02% sodium azide.
Source	Monoclonal, Mouse,IgG
Purification	The antibody was affinity-purified from mouse antiserum by affinity-chromatography using epitope-specific immunogen.
Dilution	WB 1:500-2000
Concentration	1 mg/ml
Purity	≥90%
Storage Stability	-20°C/1 year
Synonyms	
Observed Band	
Cell Pathway	Cell membrane. Cytoplasm. Early endosome. Recycling endosome. Enriched in the early/sorting and recycling endosomes. Colocalized in early/sorting endosomes with EEA1 and SNX2 and in recycling endosomes with transferrin receptor. Detected in the perinuclear region partially associated with punctate structures (By similarity). Colocalizes with PAK1 in cytoplasm, vesicular structures in the perinuclear area and membrane ruffles (By similarity). Colocalizes with RAC1 in the cytoplasm and vesicles structures (By similarity). Colocalized with MAPK1 and MAPK3 in RVLM neurons (By similarity). .
Tissue Specificity	Isoform 1, isoform 3 and isoform 4 are expressed in brain. Isoform 1 is expressed in endocrine tissues.
Function	domain:Both the presence of the PX domain and the coiled coil region are necessary for its endosomal targeting.,function:Acts either as the functional imidazoline-1 receptor (I1R) candidate or as a membrane-associated mediator of the I1R signaling. Binds numerous imidazoline ligands that induces initiation of cell-signaling cascades triggering to cell survival, growth and migration. Its

Nanjing BYabscience technology Co.,Ltd



activation by the agonist rilmenidine induces an increase in phosphorylation of mitogen-activated protein kinases MAPK1 and MAPK3 in rostral ventrolateral medulla (RVLM) neurons that exhibited rilmenidine-evoked hypotension (By similarity). Blocking its activation with efaroxan abolished rilmenidine-induced mitogen-activated protein kinase phosphorylation in RVLM neurons (By similarity). Acts as a modulator of Rac-regulated signal transduction pathways (By similarity). Suppresses Rac1-stimulated cell migr

Background

This gene encodes a nonadrenergic imidazoline-1 receptor protein that localizes to the cytosol and anchors to the inner layer of the plasma membrane. The orthologous mouse protein has been shown to influence cytoskeletal organization and cell migration by binding to alpha-5-beta-1 integrin. In humans, this protein has been shown to bind to the adapter insulin receptor substrate 4 (IRS4) to mediate translocation of alpha-5 integrin from the cell membrane to endosomes. Expression of this protein was reduced in human breast cancers while its overexpression reduced tumor growth and metastasis; possibly by limiting the expression of alpha-5 integrin. In human cardiac tissue, this gene was found to affect cell growth and death while in neural tissue it affected neuronal growth and differentiation. Alternative splicing results in multiple transcript variants encoding different isoforms. Some isoforms lack the expected C-terminal domains of a functional imidazoline receptor. [provided by RefSeq, Jan 2013],

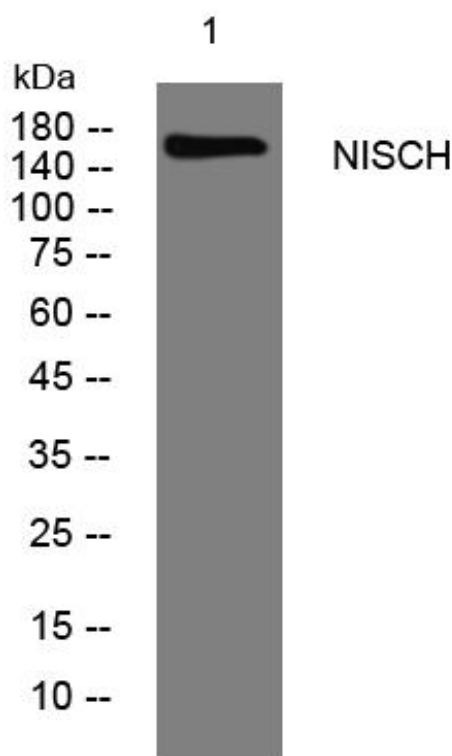
matters needing attention

Avoid repeated freezing and thawing!

Usage suggestions

This product can be used in immunological reaction related experiments. For more information, please consult technical personnel.

Products Images



Western Blot analysis of various cells using NISCH mouse mAb

Nanjing BYabscience technology Co.,Ltd