



BLMH mouse mAb

Catalog No	BYmab-12299
Isotype	IgG
Reactivity	Human; Mouse;Rat
Applications	WB
Gene Name	BLMH
Protein Name	BLMH
Immunogen	Synthesized peptide derived from human BLMH AA range: 170-220
Specificity	This antibody detects endogenous levels of BLMH at Human/Mouse/Rat
Formulation	Liquid in PBS containing 50% glycerol, 0.5% BSA and 0.02% sodium azide.
Source	Monoclonal, Mouse,IgG
Purification	The antibody was affinity-purified from mouse antiserum by affinity-chromatography using epitope-specific immunogen.
Dilution	WB 1:500-2000
Concentration	1 mg/ml
Purity	≥90%
Storage Stability	-20°C/1 year
Synonyms	
Observed Band	
Cell Pathway	Cytoplasm . Cytoplasmic granule . Co-localizes with NUDT12 in the cytoplasmic granules. .
Tissue Specificity	
Function	catalytic activity:Inactivates bleomycin B2 (a cytotoxic glycometallopeptide) by hydrolysis of a carboxamide bond of beta-aminoalanine, but also shows general aminopeptidase activity. The specificity varies somewhat with source, but amino acid arylamides of Met, Leu and Ala are preferred.,function:The normal physiological role of BLM hydrolase is unknown, but it catalyzes the inactivation of the antitumor drug BLM (a glycopeptide) by hydrolyzing the carboxamide bond of its B-aminoalaninamide moiety thus protecting normal and malignant cells from BLM toxicity.,similarity:Belongs to the peptidase C1 family.,subunit:Homohexamer.,
Background	Bleomycin hydrolase (BMH) is a cytoplasmic cysteine peptidase that is highly conserved through evolution; however, the only known activity of the enzyme is

Nanjing BYabscience technology Co.,Ltd



metabolic inactivation of the glycopeptide bleomycin (BLM), an essential component of combination chemotherapy regimens for cancer. The protein contains the signature active site residues of the cysteine protease papain superfamily. [provided by RefSeq, Jul 2008],

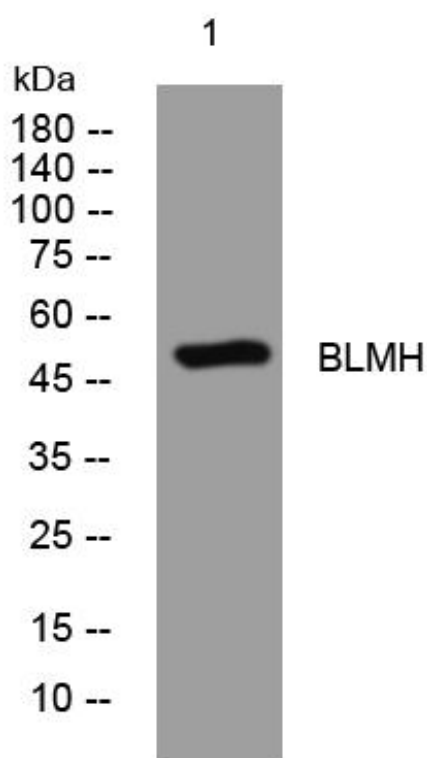
matters needing attention

Avoid repeated freezing and thawing!

Usage suggestions

This product can be used in immunological reaction related experiments. For more information, please consult technical personnel.

Products Images



Western Blot analysis of various cells using BLMH mouse mAb

Nanjing BYabscience technology Co.,Ltd

网址: www.njbybio.com

官方热线: 025-5229-8998

监督电话: 15950492658