



LY65C mouse mAb

Catalog No	BYmab-12289
Isotype	IgG
Reactivity	Human; Mouse;Rat
Applications	WB
Gene Name	LY6G5C C6orf20 G5C NG33
Protein Name	LY65C
Immunogen	Synthesized peptide derived from human LY65C AA range: 66-116
Specificity	This antibody detects endogenous levels of LY65C at Human/Mouse/Rat
Formulation	Liquid in PBS containing 50% glycerol, 0.5% BSA and 0.02% sodium azide.
Source	Monoclonal, Mouse,IgG
Purification	The antibody was affinity-purified from mouse antiserum by affinity-chromatography using epitope-specific immunogen.
Dilution	WB 1:500-2000
Concentration	1 mg/ml
Purity	≥90%
Storage Stability	-20°C/1 year
Synonyms	
Observed Band	
Cell Pathway	Secreted .
Tissue Specificity	Detected in T-cell lines and fetal and adult lung.
Function	caution:It is uncertain whether Met-1 or Met-4 is the initiator.,function:May have a role in hematopoietic cell differentiation.,PTM:N-glycosylated.,similarity:Contains 1 UPAR/Ly6 domain.,subunit:Forms oligomers.,tissue specificity:Detected in T-cell lines and fetal and adult lung.,
Background	LY6G5C belongs to a cluster of leukocyte antigen-6 (LY6) genes located in the major histocompatibility complex (MHC) class III region on chromosome 6. Members of the LY6 superfamily typically contain 70 to 80 amino acids, including 8 to 10 cysteines. Most LY6 proteins are attached to the cell surface by a glycosylphosphatidylinositol (GPI) anchor that is directly involved in signal transduction (Mallya et al., 2002 [PubMed 12079290]).[supplied by OMIM, Mar 2008],

Nanjing BYabscience technology Co.,Ltd



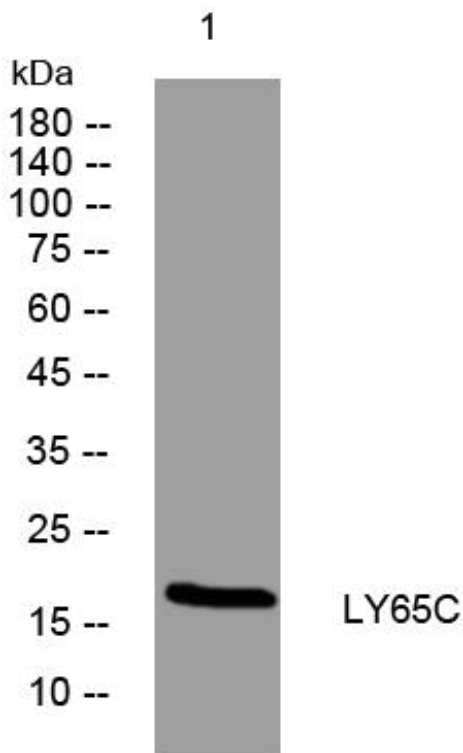
matters needing attention

Avoid repeated freezing and thawing!

Usage suggestions

This product can be used in immunological reaction related experiments. For more information, please consult technical personnel.

Products Images



Western Blot analysis of various cells using LY65C mouse mAb