



SUV3 mouse mAb

Catalog No	BYmab-12285
Isotype	IgG
Reactivity	Human; Mouse;Rat
Applications	WB
Gene Name	SUPV3L1 SUV3
Protein Name	SUV3
Immunogen	Synthesized peptide derived from human SUV3 AA range: 443-493
Specificity	This antibody detects endogenous levels of SUV3 at Human/Mouse/Rat
Formulation	Liquid in PBS containing 50% glycerol, 0.5% BSA and 0.02% sodium azide.
Source	Monoclonal, Mouse,IgG
Purification	The antibody was affinity-purified from mouse antiserum by affinity-chromatography using epitope-specific immunogen.
Dilution	WB 1:500-2000
Concentration	1 mg/ml
Purity	≥90%
Storage Stability	-20°C/1 year
Synonyms	
Observed Band	
Cell Pathway	Nucleus . Mitochondrion matrix . Mitochondrion matrix, mitochondrion nucleoid .
Tissue Specificity	Broadly expressed.
Function	cofactor:Magnesium or manganese.,enzyme regulation:Helicase activity toward DNA substrate is inhibited by micromolar concentrations of 5,6-dichloro-1-(beta-D-ribofuranosyl)benzotriazole (DRBT) and 4,5,6,7-tetrabromobenzotriazole (TBBT). Helicase activity toward RNA substrate is inhibited by elevated concentrations of TBBT. Inhibited by some ring-expanded nucleoside analogs.,function:ATPase and DNA/RNA helicase able to unwind DNA/DNA, DNA/RNA and RNA/RNA duplexes in the 5'-3' direction. May protect cells from apoptosis.,similarity:Belongs to the helicase family.,similarity:Contains 1 helicase ATP-binding domain.,similarity:Contains 1 helicase C-terminal domain.,subunit:Interacts with HBXIP.,tissue specificity:Broadly expressed.,

Nanjing BYabscience technology Co.,Ltd



Background

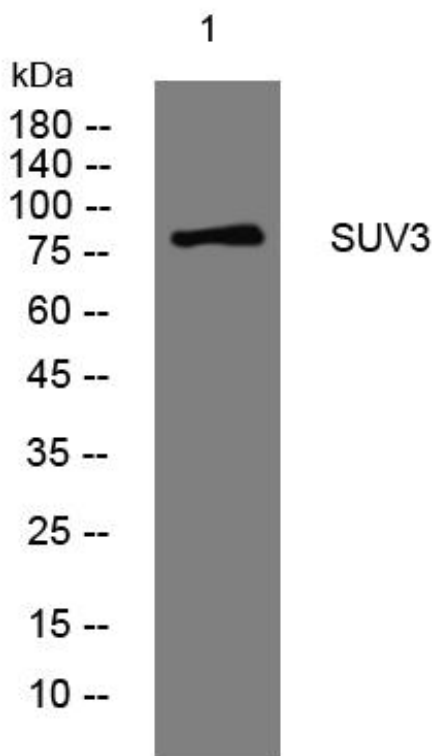
matters needing attention

Avoid repeated freezing and thawing!

Usage suggestions

This product can be used in immunological reaction related experiments. For more information, please consult technical personnel.

Products Images



Western Blot analysis of various cells using SUV3 mouse mAb

Nanjing BYabscience technology Co.,Ltd

网址: www.njbybio.com

官方热线: 025-5229-8998

监督电话: 15950492658