



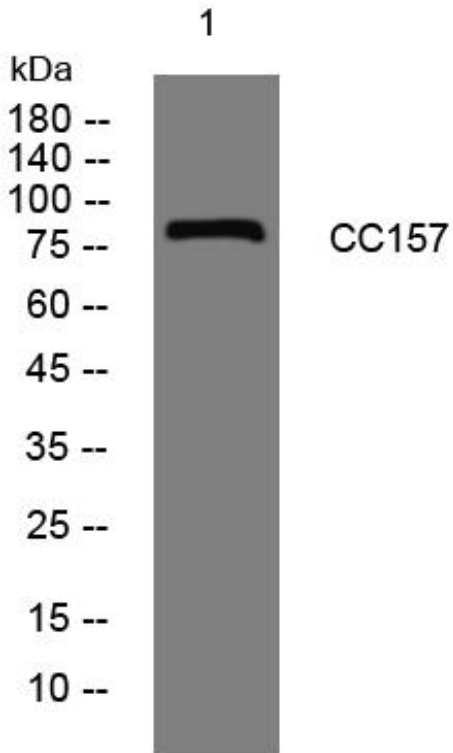
CC157 mouse mAb

Catalog No	BYmab-12281
Isotype	IgG
Reactivity	Human; Mouse
Applications	WB
Gene Name	CCDC157 KIAA1656
Protein Name	CC157
Immunogen	Synthesized peptide derived from human CC157 AA range: 16-66
Specificity	This antibody detects endogenous levels of CC157 at Human/Mouse
Formulation	Liquid in PBS containing 50% glycerol, 0.5% BSA and 0.02% sodium azide.
Source	Monoclonal, Mouse,IgG
Purification	The antibody was affinity-purified from mouse antiserum by affinity-chromatography using epitope-specific immunogen.
Dilution	WB 1:500-2000
Concentration	1 mg/ml
Purity	≥90%
Storage Stability	-20°C/1 year
Synonyms	
Observed Band	
Cell Pathway	
Tissue Specificity	
Function	sequence caution:Intron retention. This sequence is incomplete at the 5'- and 3'-ends and extensively differs from that shown due to multiple introns.,
Background	
matters needing attention	Avoid repeated freezing and thawing!
Usage suggestions	This product can be used in immunological reaction related experiments. For more information, please consult technical personnel.

Nanjing BYabscience technology Co.,Ltd



Products Images



Western Blot analysis of various cells using CC157 mouse mAb

Nanjing BYabs science technology Co.,Ltd

网址: www.njbybio.com

官方热线: 025-5229-8998

监督电话: 15950492658