



# DTX3 mouse mAb

|                           |  |
|---------------------------|--|
| <b>Catalog No</b>         | BYmab-12272  |
| <b>Isotype</b>            | IgG  |
| <b>Reactivity</b>         | Human; Mouse   |
| <b>Applications</b>       | WB   |
| <b>Gene Name</b>          | DTX3 RNF154  |
| <b>Protein Name</b>       | DTX3   |
| <b>Immunogen</b>          | Synthesized peptide derived from human DTX3 AA range: 87-137   |
| <b>Specificity</b>        | This antibody detects endogenous levels of DTX3 at Human/Mouse   |
| <b>Formulation</b>        | Liquid in PBS containing 50% glycerol, 0.5% BSA and 0.02% sodium azide.  |
| <b>Source</b>             | Monoclonal, Mouse,IgG  |
| <b>Purification</b>       | The antibody was affinity-purified from mouse antiserum by affinity-chromatography using epitope-specific immunogen.   |
| <b>Dilution</b>           | WB 1:500-2000  |
| <b>Concentration</b>      | 1 mg/ml  |
| <b>Purity</b>             | ≥90%   |
| <b>Storage Stability</b>  | -20°C/1 year   |
| <b>Synonyms</b>           |  |
| <b>Observed Band</b>      |  |
| <b>Cell Pathway</b>       | Cytoplasm .  |
| <b>Tissue Specificity</b> |  |
| <b>Function</b>           | function:Regulator of Notch signaling, a signaling pathway involved in cell-cell communications that regulates a broad spectrum of cell-fate determinations. Probably acts both as a positive and negative regulator of Notch, depending on the developmental and cell context (By similarity). Functions as an ubiquitin ligase protein in vitro, suggesting that it may regulate the Notch pathway via some ubiquitin ligase activity.,sequence caution:Intron retention.,similarity:Belongs to the Deltex family.,similarity:Contains 1 RING-type zinc finger.,subunit:Homomultimer. May form a heteromultimer with other members of the Deltex family. Interacts with NOTCH1., |
| <b>Background</b>         | DTX3 functions as an E3 ubiquitin ligase (Takeyama et al., 2003 [PubMed 12670957]).[supplied by OMIM, Nov 2009],   |

**Nanjing BYabscience technology Co.,Ltd**



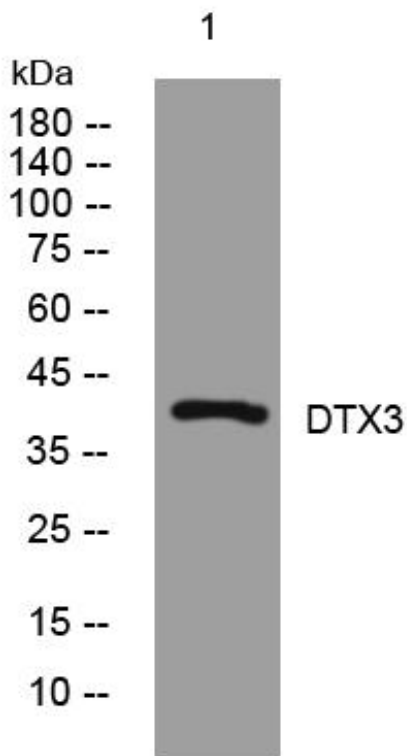
**matters needing attention**

Avoid repeated freezing and thawing!

**Usage suggestions**

This product can be used in immunological reaction related experiments. For more information, please consult technical personnel.

## Products Images



Western Blot analysis of various cells using DTX3 mouse mAb