



PGM2L mouse mAb

Catalog No	BYmab-12261
Isotype	IgG
Reactivity	Human; Mouse
Applications	WB
Gene Name	PGM2L1 BM32A
Protein Name	PGM2L
Immunogen	Synthesized peptide derived from human PGM2L AA range: 80-130
Specificity	This antibody detects endogenous levels of PGM2L at Human/Mouse
Formulation	Liquid in PBS containing 50% glycerol, 0.5% BSA and 0.02% sodium azide.
Source	Monoclonal, Mouse,IgG
Purification	The antibody was affinity-purified from mouse antiserum by affinity-chromatography using epitope-specific immunogen.
Dilution	WB 1:500-2000
Concentration	1 mg/ml
Purity	≥90%
Storage Stability	-20°C/1 year
Synonyms	
Observed Band	
Cell Pathway	Cytoplasm, cytosol .
Tissue Specificity	
Function	catalytic activity:3-phospho-D-glyceroyl phosphate + alpha-D-glucose 1-phosphate = 3-phospho-D-glycerate + alpha-D-glucose 1,6-bisphosphate.,function:Glucose 1,6-bisphosphate synthase using 1,3-bisphosphoglycerate as a phosphate donor and a series of 1-phosphate sugars as acceptors, including glucose 1-phosphate, mannose 1-phosphate, ribose 1-phosphate and deoxyribose 1-phosphate. 5 or 6-phosphosugars are bad substrates, with the exception of glucose 6-phosphate. Also synthesizes ribose 1,5-bisphosphate. Has only low phosphopentomutase and phosphoglucomutase activities.,similarity:Belongs to the phosphohexose mutase family.,
Background	

Nanjing BYabscience technology Co.,Ltd



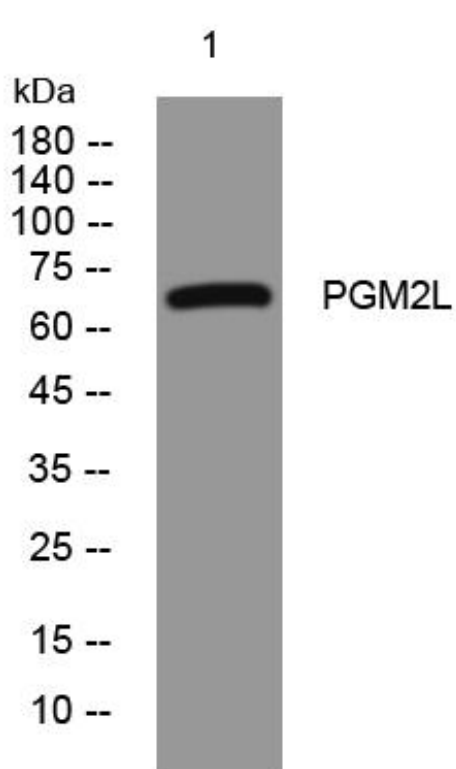
matters needing attention

Avoid repeated freezing and thawing!

Usage suggestions

This product can be used in immunological reaction related experiments. For more information, please consult technical personnel.

Products Images



Western Blot analysis of various cells using PGM2L mouse mAb

Nanjing BYabs science technology Co.,Ltd

网址: www.njbybio.com

官方热线: 025-5229-8998

监督电话: 15950492658