



RAB12 mouse mAb

Catalog No	BYmab-12260
Isotype	IgG
Reactivity	Human; Mouse;Rat
Applications	WB
Gene Name	RAB12
Protein Name	RAB12
Immunogen	Synthesized peptide derived from human RAB12 AA range: 186-236
Specificity	This antibody detects endogenous levels of RAB12 at Human/Mouse/Rat
Formulation	Liquid in PBS containing 50% glycerol, 0.5% BSA and 0.02% sodium azide.
Source	Monoclonal, Mouse,IgG
Purification	The antibody was affinity-purified from mouse antiserum by affinity-chromatography using epitope-specific immunogen.
Dilution	WB 1:500-2000
Concentration	1 mg/ml
Purity	≥90%
Storage Stability	-20°C/1 year
Synonyms	
Observed Band	
Cell Pathway	Recycling endosome membrane ; Lipid-anchor ; Cytoplasmic side . Lysosome membrane ; Lipid-anchor ; Cytoplasmic side . Golgi apparatus membrane . Cytoplasmic vesicle, autophagosome .
Tissue Specificity	
Function	caution:Could be the product of a pseudogene.,sequence caution:Intron retention.,similarity:Belongs to the small GTPase superfamily. Rab family.,
Background	
matters needing attention	Avoid repeated freezing and thawing!

Nanjing BYabscience technology Co.,Ltd

网址: www.njbybio.com

官方热线: 025-5229-8998

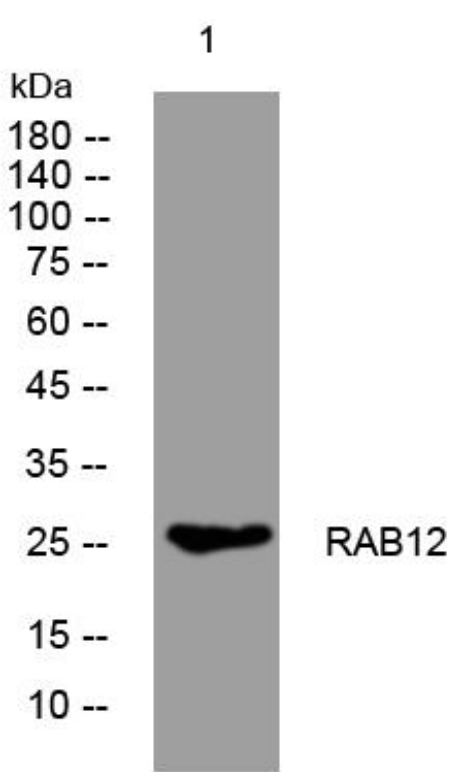
监督电话: 15950492658



Usage suggestions

This product can be used in immunological reaction related experiments. For more information, please consult technical personnel.

Products Images



Western Blot analysis of various cells using RAB12 mouse mAb

Nanjing BYabscience technology Co.,Ltd

网址: www.njbybio.com

官方热线: 025-5229-8998

监督电话: 15950492658