



CBWD1 mouse mAb

Catalog No	BYmab-12256
Isotype	IgG
Reactivity	Human; Mouse;Rat
Applications	WB
Gene Name	CBWD1
Protein Name	CBWD1
Immunogen	Synthesized peptide derived from human CBWD1 AA range: 61-111
Specificity	This antibody detects endogenous levels of CBWD1 at Human/Mouse/Rat
Formulation	Liquid in PBS containing 50% glycerol, 0.5% BSA and 0.02% sodium azide.
Source	Monoclonal, Mouse,IgG
Purification	The antibody was affinity-purified from mouse antiserum by affinity-chromatography using epitope-specific immunogen.
Dilution	WB 1:500-2000
Concentration	1 mg/ml
Purity	≥90%
Storage Stability	-20°C/1 year
Synonyms	
Observed Band	
Cell Pathway	
Tissue Specificity	Ubiquitously expressed. Up-regulated in cultured astrocytes treated with dopamine.
Function	induction:Increased expression in response to dopamine treatment.,similarity:Belongs to the cobW family.,similarity:Contains 1 cobW C-terminal domain.,tissue specificity:Ubiquitously expressed. Up-regulated in cultured astrocytes treated with dopamine.,
Background	
matters needing attention	Avoid repeated freezing and thawing!

Nanjing BYabscience technology Co.,Ltd

网址: www.njbybio.com

官方热线: 025-5229-8998

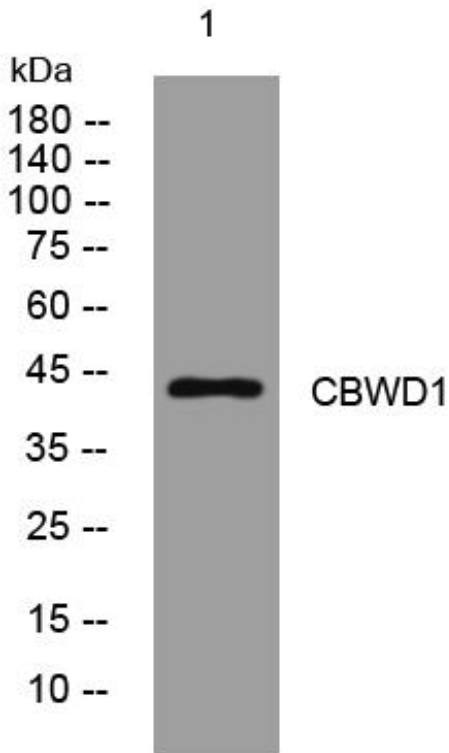
监督电话: 15950492658



Usage suggestions

This product can be used in immunological reaction related experiments. For more information, please consult technical personnel.

Products Images



Western Blot analysis of various cells using CBWD1 mouse mAb

Nanjing BYabscience technology Co.,Ltd

网址: www.njbybio.com

官方热线: 025-5229-8998

监督电话: 15950492658