



SELH mouse mAb

Catalog No	BYmab-12251
Isotype	IgG
Reactivity	Human; Mouse
Applications	WB
Gene Name	SELH C11orf31
Protein Name	SELH
Immunogen	Synthesized peptide derived from human SELH AA range: 58-108
Specificity	This antibody detects endogenous levels of SELH at Human/Mouse
Formulation	Liquid in PBS containing 50% glycerol, 0.5% BSA and 0.02% sodium azide.
Source	Monoclonal, Mouse,IgG
Purification	The antibody was affinity-purified from mouse antiserum by affinity-chromatography using epitope-specific immunogen.
Dilution	WB 1:500-2000
Concentration	1 mg/ml
Purity	≥90%
Storage Stability	-20°C/1 year
Synonyms	
Observed Band	
Cell Pathway	
Tissue Specificity	
Function	function:May be involved in a redox-related process .,similarity:Belongs to the SelWTH family.,
Background	This gene encodes a nucleolar protein, which belongs to the SelWTH family. It functions as an oxidoreductase, and has been shown to protect neurons against UVB-induced damage by inhibiting apoptotic cell death pathways, promote mitochondrial biogenesis and mitochondrial function, and suppress cellular senescence through genome maintenance and redox regulation. This protein is a selenoprotein, containing the rare amino acid selenocysteine (Sec) at its active site. Sec is encoded by the UGA codon, which normally signals translation termination. The 3' UTRs of selenoprotein mRNAs contain a conserved stem-loop structure, designated the Sec insertion sequence (SECIS) element,

Nanjing BYabscience technology Co.,Ltd



that is necessary for the recognition of UGA as a Sec codon, rather than as a stop signal. Alternatively spliced transcript variants have been found for this gene. [provided by RefSeq, May 2016],

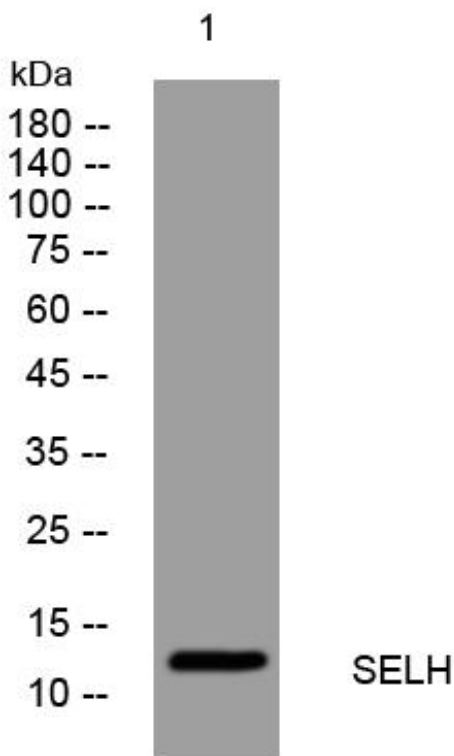
matters needing attention

Avoid repeated freezing and thawing!

Usage suggestions

This product can be used in immunological reaction related experiments. For more information, please consult technical personnel.

Products Images



Western Blot analysis of various cells using SELH mouse mAb