



# DPOLN mouse mAb

Catalog No	BYmab-12242
Isotype	IgG
Reactivity	Human; Mouse
Applications	WB
Gene Name	POLN
Protein Name	DPOLN
Immunogen	Synthesized peptide derived from human DPOLN AA range: 35-85
Specificity	This antibody detects endogenous levels of DPOLN at Human/Mouse
Formulation	Liquid in PBS containing 50% glycerol, 0.5% BSA and 0.02% sodium azide.
Source	Monoclonal, Mouse,IgG
Purification	The antibody was affinity-purified from mouse antiserum by affinity-chromatography using epitope-specific immunogen.
Dilution	WB 1:500-2000
Concentration	1 mg/ml
Purity	≥90%
Storage Stability	-20°C/1 year
Synonyms	
Observed Band	
Cell Pathway	Nucleus .
Tissue Specificity	Highly expressed in testis and heart. Weakly expressed in skeletal muscle.
Function	alternative products:Additional isoforms seem to exist,catalytic activity:Deoxynucleoside triphosphate + DNA(n) = diphosphate + DNA(n+1).,similarity:Belongs to the DNA polymerase type-A family.,tissue specificity:Highly expressed in testis and heart. Weakly expressed in skeletal muscle.,
Background	This gene encodes a DNA polymerase type-A family member. The encoded protein plays a role in DNA repair and homologous recombination. This gene shares its 5' exons with some transcripts from overlapping GenelD: 79441, which encodes an augmentin-like protein complex subunit. [provided by RefSeq, Dec 2014],

Nanjing BYabscience technology Co.,Ltd



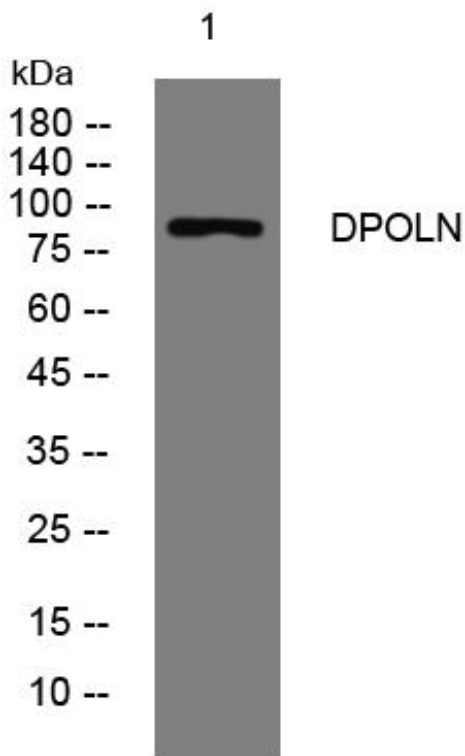
**matters needing attention**

Avoid repeated freezing and thawing!

**Usage suggestions**

This product can be used in immunological reaction related experiments. For more information, please consult technical personnel.

## Products Images



Western Blot analysis of various cells using DPOLN mouse mAb