



CYBR1 mouse mAb

Catalog No	BYmab-12238
Isotype	IgG
Reactivity	Human; Mouse;Rat
Applications	WB
Gene Name	CYBRD1 DCYTB FRRS3
Protein Name	CYBR1
Immunogen	Synthesized peptide derived from human CYBR1 AA range: 41-91
Specificity	This antibody detects endogenous levels of CYBR1 at Human/Mouse/Rat
Formulation	Liquid in PBS containing 50% glycerol, 0.5% BSA and 0.02% sodium azide.
Source	Monoclonal, Mouse,IgG
Purification	The antibody was affinity-purified from mouse antiserum by affinity-chromatography using epitope-specific immunogen.
Dilution	WB 1:500-2000
Concentration	1 mg/ml
Purity	≥90%
Storage Stability	-20°C/1 year
Synonyms	
Observed Band	
Cell Pathway	Cell membrane ; Multi-pass membrane protein . Apical cell membrane ; Multi-pass membrane protein . Localized at the brush border of duodenal cells. .
Tissue Specificity	Present in erythrocyte membranes (at protein level). Also expressed in respiratory epithelium.
Function	cofactor: Binds 2 heme groups non-covalently.,disease: Defects in CYBRD1 may be a cause of primary hereditary hemochromatosis (HFE). HFE is an iron-loading disorder characterized by iron accumulation in parenchymal cells. Iron accumulation usually results in tissue damage and causes cirrhosis of the liver, diabetes mellitus, arthropathy, cardiomyopathy, endocrine abnormalities and an increased risk of hepatocellular carcinoma.,function: Ferric-chelate reductase that reduces Fe(3+) to Fe(2+). Present at the brush border of duodenal enterocytes where it probably reduces dietary Fe(3+) thereby facilitating its transport into the mucosal cells. Uses ascorbate as electron donor. May be involved in extracellular ascorbate recycling in erythrocyte membranes. May also act as a ferrireductase in airway epithelial cells.,induction: By iron deficiency (at protein

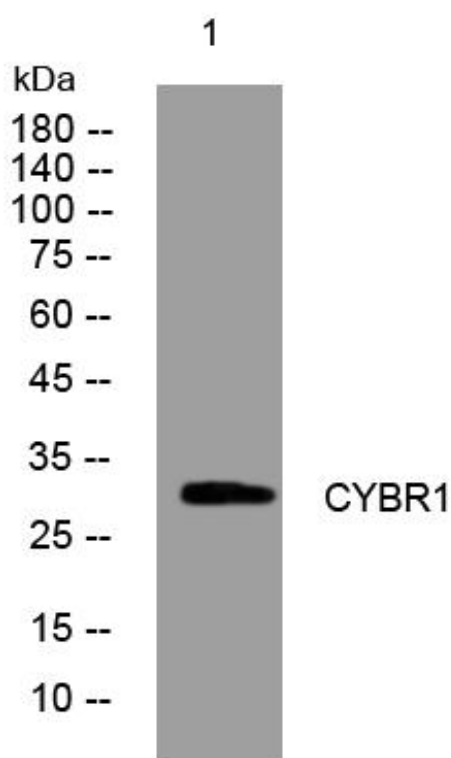
Nanjing BYabscience technology Co.,Ltd



level).,similarity:Contains 1 cytochrom

Background	This gene is a member of the cytochrome b(561) family that encodes an iron-regulated protein. It highly expressed in the duodenal brush border membrane. It has ferric reductase activity and is believed to play a physiological role in dietary iron absorption. [provided by RefSeq, Jul 2008],
matters needing attention	Avoid repeated freezing and thawing!
Usage suggestions	This product can be used in immunological reaction related experiments. For more information, please consult technical personnel.

Products Images



Western Blot analysis of various cells using CYBR1 mouse mAb

Nanjing BYabscience technology Co.,Ltd

网址: www.njbybio.com

官方热线: 025-5229-8998

监督电话: 15950492658