



CK092 mouse mAb

| | |
|---------------------------|--|
| Catalog No | BYmab-12223 |
| Isotype | IgG |
| Reactivity | Human;Rat;Mouse; |
| Applications | WB |
| Gene Name | C11orf92 |
| Protein Name | CK092 |
| Immunogen | Synthesized peptide derived from human CK092 AA range: 40-90 |
| Specificity | This antibody detects endogenous levels of CK092 at Human |
| Formulation | Liquid in PBS containing 50% glycerol, 0.5% BSA and 0.02% sodium azide. |
| Source | Monoclonal, Mouse,IgG |
| Purification | The antibody was affinity-purified from mouse antiserum by affinity-chromatography using epitope-specific immunogen. |
| Dilution | WB 1:500-2000 |
| Concentration | 1 mg/ml |
| Purity | ≥90% |
| Storage Stability | -20°C/1 year |
| Synonyms | |
| Observed Band | |
| Cell Pathway | Membrane ; Single-pass membrane protein . Co-localizes with crystalloid granules of eosinophils and granular organelles of mast cells, neutrophils, macrophages and dendritic cells. |
| Tissue Specificity | Expressed in gastrointestinal and immune tissue, as well as prostate, testis and ovary. Expressed in lamina propria and eosinophils but not in epithelial cells. Expression is greater in benign adjacent tissues than in colon tumors. |
| Function | |
| Background | This gene encodes a transmembrane protein that localizes to granular structures, including crystalloid eosinophilic granules and other granular organelles. This gene, along with an overlapping opposite strand gene, has been implicated as a susceptibility locus for colorectal cancer. Alternative splicing of this gene results in multiple transcript variants. [provided by RefSeq, Nov 2014], |

Nanjing BYabscience technology Co.,Ltd

网址: www.njbybio.com

官方热线: 025-5229-8998

监督电话: 15950492658



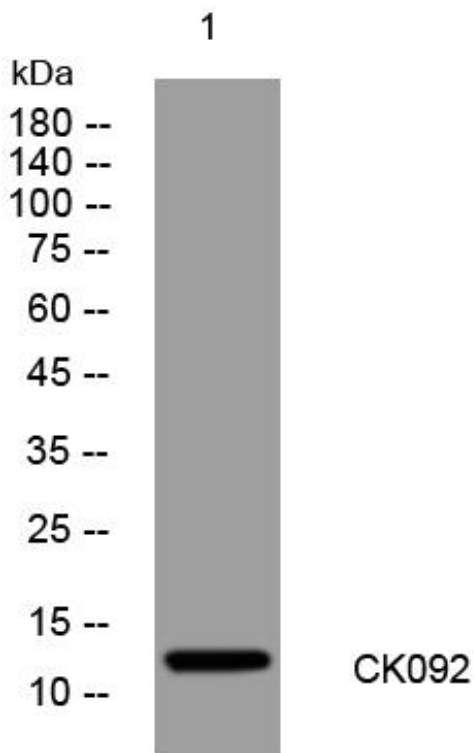
matters needing attention

Avoid repeated freezing and thawing!

Usage suggestions

This product can be used in immunological reaction related experiments. For more information, please consult technical personnel.

Products Images



Western Blot analysis of various cells using CK092 mouse mAb