



WIPF3 mouse mAb

Catalog No	BYmab-12221
Isotype	IgG
Reactivity	Human; Mouse;Rat
Applications	WB
Gene Name	WIPF3 CR16
Protein Name	WIPF3
Immunogen	Synthesized peptide derived from human WIPF3 AA range: 66-116
Specificity	This antibody detects endogenous levels of WIPF3 at Human/Mouse/Rat
Formulation	Liquid in PBS containing 50% glycerol, 0.5% BSA and 0.02% sodium azide.
Source	Monoclonal, Mouse,IgG
Purification	The antibody was affinity-purified from mouse antiserum by affinity-chromatography using epitope-specific immunogen.
Dilution	WB 1:500-2000
Concentration	1 mg/ml
Purity	≥90%
Storage Stability	-20°C/1 year
Synonyms	
Observed Band	
Cell Pathway	Cytoplasm. In hippocampal neurons colocalizes with WASL in the cell body, axons and the growth cone. .
Tissue Specificity	
Function	domain:The KLKR motif is essential for G-actin binding and for actin polymerization.,domain:The profilin-binding motif has been implicated in the interaction with profilin and SH3 domains.,domain:The WH2 domain is found in a number of putative actin-binding proteins.,function:May be a regulator of cytoskeletal organization. May have a role in spermatogenesis.,similarity:Belongs to the verprolin family.,similarity:Contains 1 WH2 domain.,subcellular location:In hippocampal neurons colocalizes with WASL in the cell body, axons and the growth cone.,subunit:Interacts with WASL, and monomeric and filamentous actin.,
Background	

Nanjing BYabscience technology Co.,Ltd

网址: www.njbybio.com

官方热线: 025-5229-8998

监督电话: 15950492658



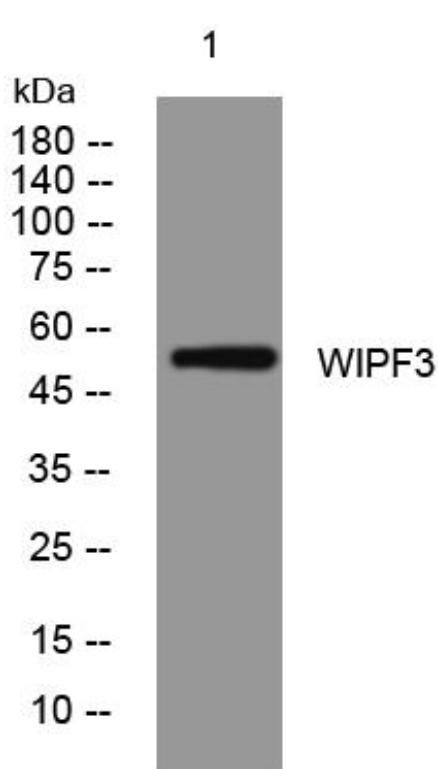
matters needing attention

Avoid repeated freezing and thawing!

Usage suggestions

This product can be used in immunological reaction related experiments. For more information, please consult technical personnel.

Products Images



Western Blot analysis of various cells using WIPF3 mouse mAb