



CST9 mouse mAb

| | |
|---------------------------|---------------------------------------------------------------------------------------------------------------------------------------------------------------------------------------------------------------------------------------------------------------------------------------------------------------------------------------------------------------------------------------------------------------------------------------------------------------------------------------------------------------------------------------------------------------------------|
| Catalog No | BYmab-12220 |
| Isotype | IgG |
| Reactivity | Human; Mouse |
| Applications | WB |
| Gene Name | CST9 CLM |
| Protein Name | CST9 |
| Immunogen | Synthesized peptide derived from human CST9 AA range: 108-158 |
| Specificity | This antibody detects endogenous levels of CST9 at Human/Mouse |
| Formulation | Liquid in PBS containing 50% glycerol, 0.5% BSA and 0.02% sodium azide. |
| Source | Monoclonal, Mouse,IgG |
| Purification | The antibody was affinity-purified from mouse antiserum by affinity-chromatography using epitope-specific immunogen. |
| Dilution | WB 1:500-2000 |
| Concentration | 1 mg/ml |
| Purity | ≥90% |
| Storage Stability | -20°C/1 year |
| Synonyms | |
| Observed Band | |
| Cell Pathway | Secreted . May be targeted through the Golgi via the secretory pathway. . |
| Tissue Specificity | Expressed in heart, placenta, lung, liver, skeletal muscle and pancreas (PubMed:12535658). Not expressed in brain (PubMed:12535658). Expressed in epididymis, kidney, testis, spinal cord, and thymus with a strong expression in epididymis and kidney and a weak expression in the spinal cord and thymus (PubMed:20565543). |
| Function | function:May play a role in hematopoietic differentiation or inflammation.,induction:Up-regulated by LPS, in some cancer cells such as promyelocytic leukemia cells (HL-60) or myelomonocytic leukemia cells (U-937).,similarity:Belongs to the cystatin family.,subcellular location:May be targeted through the Golgi via the secretory pathway.,tissue specificity:Expressed in heart, placenta, lung, liver, skeletal muscle and pancreas. Not expressed in brain. Barely expressed in tumor cell lines except for breast adenocarcinoma MCF-7 cells and U251 cells., |

Nanjing BYabscience technology Co.,Ltd



Background

The cystatin superfamily encompasses proteins that contain multiple cystatin-like sequences. Some of the members are active cysteine protease inhibitors, while others have lost or perhaps never acquired this inhibitory activity. There are three inhibitory families in the superfamily, including the type 1 cystatins (stefins), type 2 cystatins and the kininogens. The type 2 cystatin proteins are a class of cysteine proteinase inhibitors found in a variety of human fluids and secretions, where they appear to provide protective functions. The cystatin locus on chromosome 20 contains the majority of the type 2 cystatin genes and pseudogenes. This gene is located in the cystatin locus and encodes a secreted protein that may play a role in hematopoietic differentiation or inflammation. [provided by RefSeq, Jul 2008],

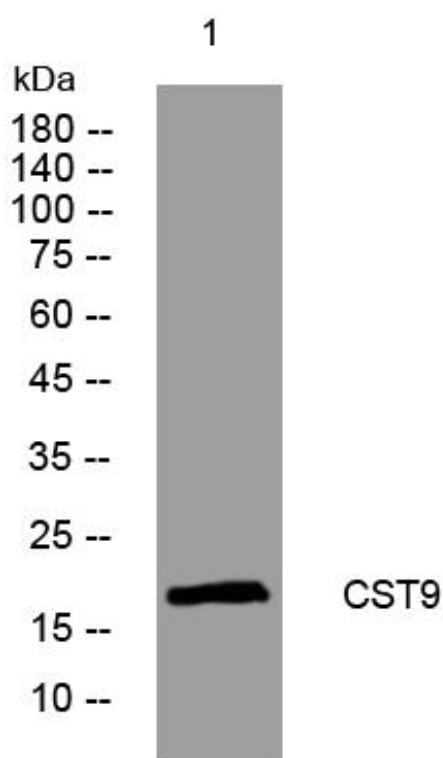
matters needing attention

Avoid repeated freezing and thawing!

Usage suggestions

This product can be used in immunological reaction related experiments. For more information, please consult technical personnel.

Products Images



Western Blot analysis of various cells using CST9 mouse mAb