



CBX4 mouse mAb

| | |
|---------------------------|---|
| Catalog No | BYmab-12217 |
| Isotype | IgG |
| Reactivity | Human; Mouse |
| Applications | WB |
| Gene Name | CBX4 |
| Protein Name | CBX4 |
| Immunogen | Synthesized peptide derived from human CBX4 AA range: 196-246 |
| Specificity | This antibody detects endogenous levels of CBX4 at Human/Mouse |
| Formulation | Liquid in PBS containing 50% glycerol, 0.5% BSA and 0.02% sodium azide. |
| Source | Monoclonal, Mouse,IgG |
| Purification | The antibody was affinity-purified from mouse antiserum by affinity-chromatography using epitope-specific immunogen. |
| Dilution | WB 1:500-2000 |
| Concentration | 1 mg/ml |
| Purity | ≥90% |
| Storage Stability | -20°C/1 year |
| Synonyms | |
| Observed Band | |
| Cell Pathway | Nucleus . Nucleus speckle . Localization to nuclear polycomb bodies is required for ZNF131 sumoylation (PubMed:22467880). Localized in distinct foci on chromatin (PubMed:18927235). . |
| Tissue Specificity | Ubiquitous. |
| Function | function:E3 SUMO-protein ligase which facilitates SUMO1 conjugation by UBE2I. Component of the Polycomb group (PcG) multiprotein PRC1 complex, a complex required to maintain the transcriptionally repressive state of many genes, including Hox genes, throughout development. PcG PRC1 complex acts via chromatin remodeling and modification of histones; it mediates monoubiquitination of histone H2A 'Lys-119', rendering chromatin heritably changed in its expressibility.,pathway:Protein modification; protein sumoylation.,PTM:Phosphorylated on Thr-495 by HIPK2 upon DNA damage; which enhances E3 SUMO-protein ligase activity and promotes sumoylation on Lys-492.,similarity:Contains 1 chromo domain.,subunit:Interacts with histone H3-K9Me3 (By similarity). Component of chromatin-associated class II PcG |

Nanjing BYabscience technology Co.,Ltd



repressive complex 1 (PRC1/hPRC-H) at least composed of PCGF2/RNF110, BMI1/PCGF4, CBX2/M33, CBX4/PC2

Background

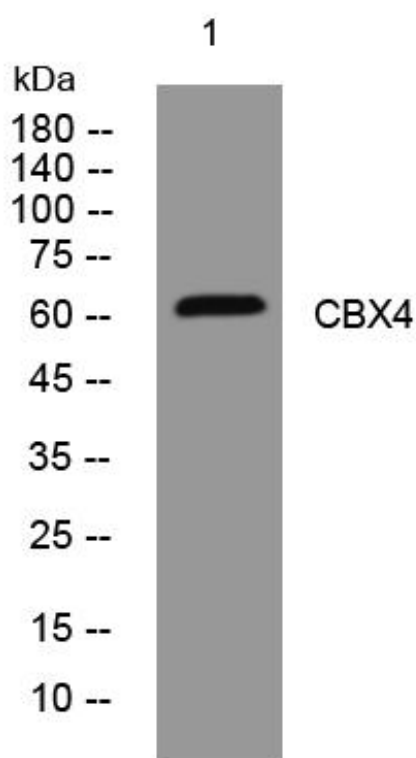
matters needing attention

Avoid repeated freezing and thawing!

Usage suggestions

This product can be used in immunological reaction related experiments. For more information, please consult technical personnel.

Products Images



Western Blot analysis of various cells using CBX4 mouse mAb

Nanjing BYabscience technology Co.,Ltd

网址: www.njbybio.com

官方热线: 025-5229-8998

监督电话: 15950492658