



ARH37 mouse mAb

Catalog No	BYmab-12184
Isotype	IgG
Reactivity	Human; Mouse;Rat
Applications	WB
Gene Name	ARHGEF37
Protein Name	ARH37
Immunogen	Synthesized peptide derived from human ARH37 AA range: 24-74
Specificity	This antibody detects endogenous levels of ARH37 at Human/Mouse/Rat
Formulation	Liquid in PBS containing 50% glycerol, 0.5% BSA and 0.02% sodium azide.
Source	Monoclonal, Mouse,IgG
Purification	The antibody was affinity-purified from mouse antiserum by affinity-chromatography using epitope-specific immunogen.
Dilution	WB 1:500-2000
Concentration	1 mg/ml
Purity	≥90%
Storage Stability	-20°C/1 year
Synonyms	
Observed Band	
Cell Pathway	cytoplasm,
Tissue Specificity	
Function	function:May act as a guanine nucleotide exchange factor (GEF).,similarity:Contains 1 BAR domain.,similarity:Contains 1 DH (DBL-homology) domain.,similarity:Contains 2 SH3 domains.,
Background	
matters needing attention	Avoid repeated freezing and thawing!

Nanjing BYabscience technology Co.,Ltd

网址: www.njbybio.com

官方热线: 025-5229-8998

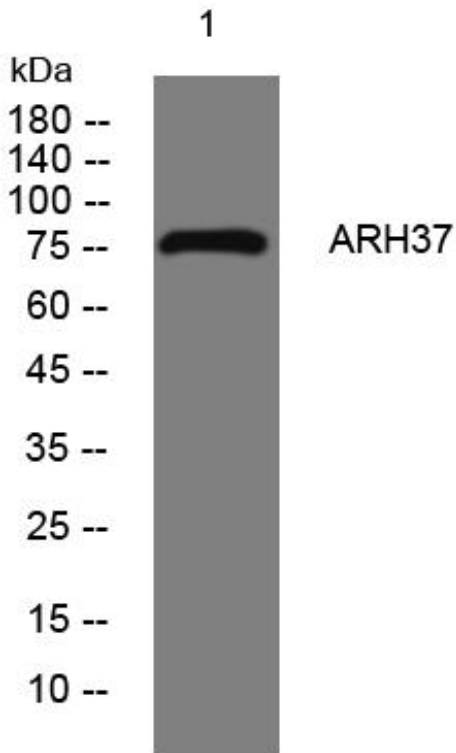
监督电话: 15950492658



Usage suggestions

This product can be used in immunological reaction related experiments. For more information, please consult technical personnel.

Products Images



Western Blot analysis of various cells using ARH37 mouse mAb

Nanjing BYabs science technology Co.,Ltd

网址: www.njbybio.com

官方热线: 025-5229-8998

监督电话: 15950492658