



ZSWM7 mouse mAb

Catalog No	BYmab-12181
Isotype	IgG
Reactivity	Human; Mouse
Applications	WB
Gene Name	ZSWIM7 SWS1
Protein Name	ZSWM7
Immunogen	Synthesized peptide derived from human ZSWM7 AA range: 68-118
Specificity	This antibody detects endogenous levels of ZSWM7 at Human/Mouse
Formulation	Liquid in PBS containing 50% glycerol, 0.5% BSA and 0.02% sodium azide.
Source	Monoclonal, Mouse,IgG
Purification	The antibody was affinity-purified from mouse antiserum by affinity-chromatography using epitope-specific immunogen.
Dilution	WB 1:500-2000
Concentration	1 mg/ml
Purity	≥90%
Storage Stability	-20°C/1 year
Synonyms	
Observed Band	
Cell Pathway	Nucleus .
Tissue Specificity	
Function	function:Involved in early stages of the homologous recombination repair (HRR) pathway of double-stranded DNA breaks arising during DNA replication or induced by DNA-damaging agents.,similarity:Belongs to the SWS1 family.,similarity:Contains 1 SWIM-type zinc finger.,subunit:Interacts with RAD51L3.,
Background	
matters needing attention	Avoid repeated freezing and thawing!

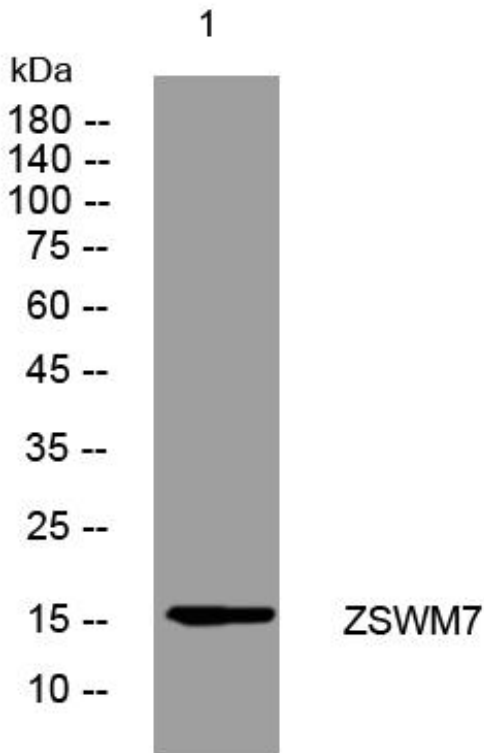
Nanjing BYabscience technology Co.,Ltd



Usage suggestions

This product can be used in immunological reaction related experiments. For more information, please consult technical personnel.

Products Images



Western Blot analysis of various cells using ZSWM7 mouse mAb

Nanjing BYabs science technology Co.,Ltd

网址: www.njbybio.com

官方热线: 025-5229-8998

监督电话: 15950492658