



# NCF1C mouse mAb

Catalog No	BYmab-12179
Isotype	IgG
Reactivity	Human;Rat;Mouse;
Applications	WB
Gene Name	NCF1C SH3PXD1C
Protein Name	NCF1C
Immunogen	Synthesized peptide derived from human NCF1C AA range: 100-150
Specificity	This antibody detects endogenous levels of NCF1C at Human
Formulation	Liquid in PBS containing 50% glycerol, 0.5% BSA and 0.02% sodium azide.
Source	Monoclonal, Mouse,IgG
Purification	The antibody was affinity-purified from mouse antiserum by affinity-chromatography using epitope-specific immunogen.
Dilution	WB 1:500-2000
Concentration	1 mg/ml
Purity	≥90%
Storage Stability	-20°C/1 year
Synonyms	
Observed Band	
Cell Pathway	Cytoplasm .
Tissue Specificity	
Function	disease:Defects in NCF1 are the cause of chronic granulomatous disease autosomal recessive cytochrome-b-positive type 1 (CGD1) [MIM:233700]. Chronic granulomatous disease is a genetically heterogeneous disorder characterized by the inability of neutrophils and phagocytes to kill microbes that they have ingested. Patients suffer from life-threatening bacterial/fungal infections.,function:NCF2, NCF1, and a membrane bound cytochrome b558 are required for activation of the latent NADPH oxidase (necessary for superoxide production).,online information:NCF1 deficiency database,similarity:Contains 1 PX (phox homology) domain.,similarity:Contains 2 SH3 domains.,subunit:Interacts with NOXA1.,

Nanjing BYabscience technology Co.,Ltd



## Background

The neutrophil cytosolic factor 1 (NCF1) gene encodes the 47 kDa cytosolic subunit of neutrophil NADPH oxidase, which produces superoxide anion. The NCF1 gene is located in close proximity to two highly similar, multi-exon pseudogenes at chromosome 7q11.23, corresponding to this gene record and GeneID:654816. The two pseudogenes contain a dinucleotide deletion (delta-GT) in exon 2 that results in a frameshift and truncation of the open reading frame, and neither pseudogene is likely to express a protein. Recombination events between the pseudogenes and the functional NCF1 gene can inactivate the NCF1 gene and result in chronic granulomatous disease. [provided by RefSeq, Nov 2009],

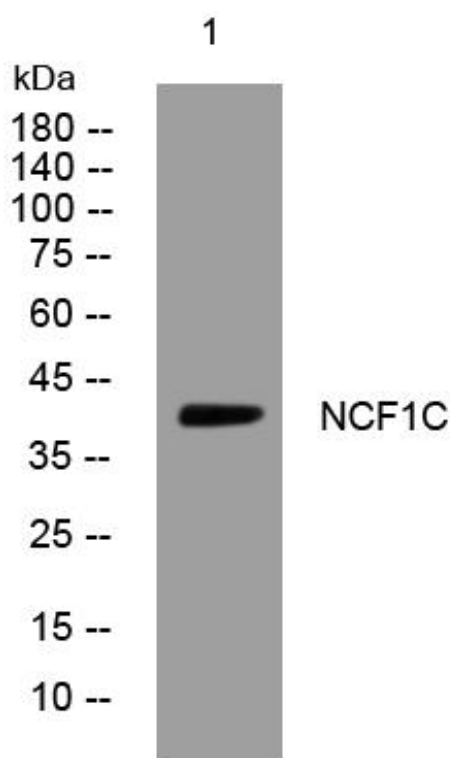
## matters needing attention

Avoid repeated freezing and thawing!

## Usage suggestions

This product can be used in immunological reaction related experiments. For more information, please consult technical personnel.

## Products Images



Western Blot analysis of various cells using NCF1C mouse mAb