



GTDC1 mouse mAb

Catalog No	BYmab-12167
Isotype	IgG
Reactivity	Human; Mouse;Rat
Applications	WB
Gene Name	GTDC1
Protein Name	GTDC1
Immunogen	Synthesized peptide derived from human GTDC1 AA range: 273-323
Specificity	This antibody detects endogenous levels of GTDC1 at Human/Mouse/Rat
Formulation	Liquid in PBS containing 50% glycerol, 0.5% BSA and 0.02% sodium azide.
Source	Monoclonal, Mouse,IgG
Purification	The antibody was affinity-purified from mouse antiserum by affinity-chromatography using epitope-specific immunogen.
Dilution	WB 1:500-2000
Concentration	1 mg/ml
Purity	≥90%
Storage Stability	-20°C/1 year
Synonyms	
Observed Band	
Cell Pathway	
Tissue Specificity	Ubiquitous. Expressed at high levels in the lung, brain, spleen, testis, placenta, ovary, pancreas, spleen and peripheral blood leukocytes. Expressed at low level in the colon, small intestine, kidney, skeletal muscle and thymus. Expressed at high level in colon adenocarcinoma.
Function	similarity:Belongs to the glycosyltransferase 1 family.,tissue specificity:Ubiquitous. Expressed at high levels in the lung, spleen, testis and peripheral blood leukocytes.,
Background	
matters needing attention	Avoid repeated freezing and thawing!

Nanjing BYabscience technology Co.,Ltd

网址: www.njbybio.com

官方热线: 025-5229-8998

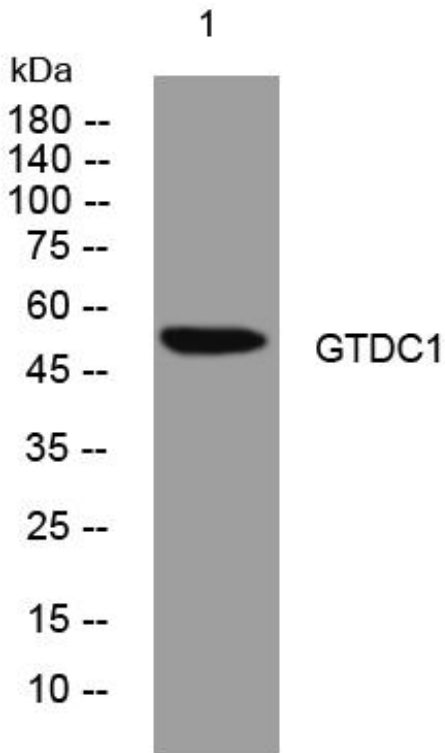
监督电话: 15950492658



Usage suggestions

This product can be used in immunological reaction related experiments. For more information, please consult technical personnel.

Products Images



Western Blot analysis of various cells using GTDC1 mouse mAb

Nanjing BYabscience technology Co.,Ltd

网址: www.njbybio.com

官方热线: 025-5229-8998

监督电话: 15950492658