



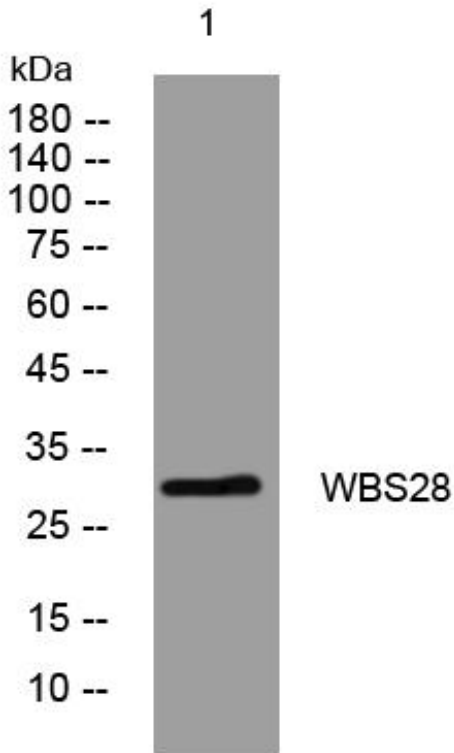
WBS28 mouse mAb

Catalog No	BYmab-12164
Isotype	IgG
Reactivity	Human; Mouse
Applications	WB
Gene Name	WBSCR28
Protein Name	WBS28
Immunogen	Synthesized peptide derived from human WBS28 AA range: 25-75
Specificity	This antibody detects endogenous levels of WBS28 at Human/Mouse
Formulation	Liquid in PBS containing 50% glycerol, 0.5% BSA and 0.02% sodium azide.
Source	Monoclonal, Mouse,IgG
Purification	The antibody was affinity-purified from mouse antiserum by affinity-chromatography using epitope-specific immunogen.
Dilution	WB 1:500-2000
Concentration	1 mg/ml
Purity	≥90%
Storage Stability	-20°C/1 year
Synonyms	
Observed Band	
Cell Pathway	Membrane ; Multi-pass membrane protein .
Tissue Specificity	
Function	
Background	
matters needing attention	Avoid repeated freezing and thawing!
Usage suggestions	This product can be used in immunological reaction related experiments. For more information, please consult technical personnel.

Nanjing BYabscience technology Co.,Ltd



Products Images



Western Blot analysis of various cells using WBS28 mouse mAb