



MILK2 mouse mAb

Catalog No	BYmab-12161
Isotype	IgG
Reactivity	Human;Rat;Mouse;
Applications	WB
Gene Name	MICALL2
Protein Name	MILK2
Immunogen	Synthesized peptide derived from human MILK2 AA range: 269-319
Specificity	This antibody detects endogenous levels of MILK2 at Human
Formulation	Liquid in PBS containing 50% glycerol, 0.5% BSA and 0.02% sodium azide.
Source	Monoclonal, Mouse,IgG
Purification	The antibody was affinity-purified from mouse antiserum by affinity-chromatography using epitope-specific immunogen.
Dilution	WB 1:500-2000
Concentration	1 mg/ml
Purity	≥90%
Storage Stability	-20°C/1 year
Synonyms	
Observed Band	
Cell Pathway	Cell membrane ; Peripheral membrane protein . Cell junction, tight junction . Recycling endosome . Cell projection . Cytoplasm, cytoskeleton . Cytoplasm, cytosol .
Tissue Specificity	
Function	function:May be a cytoskeletal regulator.,similarity:Contains 1 CH (calponin-homology) domain.,similarity:Contains 1 LIM zinc-binding domain.,
Background	
matters needing attention	Avoid repeated freezing and thawing!

Nanjing BYabscience technology Co.,Ltd

网址: www.njbybio.com

官方热线: 025-5229-8998

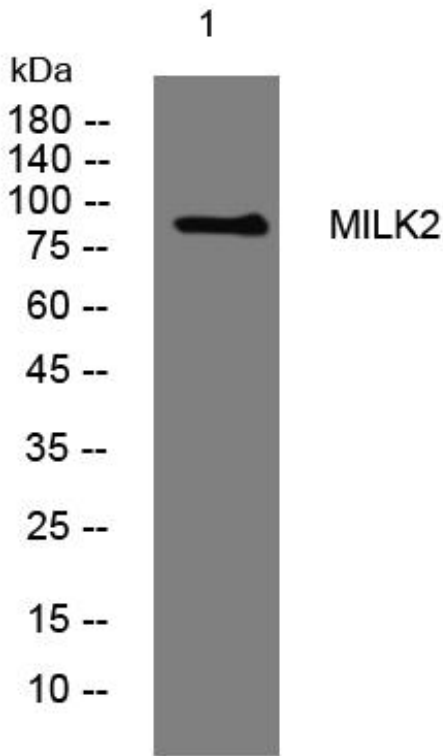
监督电话: 15950492658



Usage suggestions

This product can be used in immunological reaction related experiments. For more information, please consult technical personnel.

Products Images



Western Blot analysis of various cells using MILK2 mouse mAb

Nanjing BYabscience technology Co.,Ltd

网址: www.njbybio.com

官方热线: 025-5229-8998

监督电话: 15950492658