



S13A1 mouse mAb

Catalog No	BYmab-12158
Isotype	IgG
Reactivity	Human; Mouse;Rat
Applications	WB
Gene Name	SLC13A1 NAS1 NAS11
Protein Name	S13A1
Immunogen	Synthesized peptide derived from human S13A1 AA range: 490-540
Specificity	This antibody detects endogenous levels of S13A1 at Human/Mouse/Rat
Formulation	Liquid in PBS containing 50% glycerol, 0.5% BSA and 0.02% sodium azide.
Source	Monoclonal, Mouse,IgG
Purification	The antibody was affinity-purified from mouse antiserum by affinity-chromatography using epitope-specific immunogen.
Dilution	WB 1:500-2000
Concentration	1 mg/ml
Purity	≥90%
Storage Stability	-20°C/1 year
Synonyms	
Observed Band	
Cell Pathway	Membrane; Multi-pass membrane protein.
Tissue Specificity	Highly expressed in kidney; not detectable in the other tissues tested.
Function	function:Sodium/sulfate cotransporter that mediates sulfate reabsorption in the kidney.,induction:Inhibited by thiosulfate, selenate, molybdate, tungstate, citrate and succinate.,similarity:Belongs to the SLC13A transporter (TC 2.A.47) family. NADC subfamily.,tissue specificity:Highly expressed in kidney; not detectable in the other tissues tested.,
Background	The protein encoded by this gene is an apical membrane Na(+)-sulfate cotransporter involved in sulfate homeostasis in the kidney. Defects in this gene lead to many pathophysiologic problems. [provided by RefSeq, May 2016],
matters needing attention	Avoid repeated freezing and thawing!

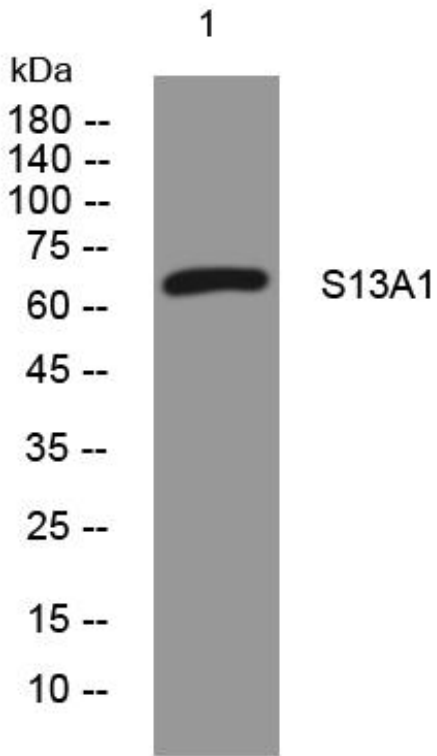
Nanjing BYabscience technology Co.,Ltd



Usage suggestions

This product can be used in immunological reaction related experiments. For more information, please consult technical personnel.

Products Images



Western Blot analysis of various cells using S13A1 mouse mAb

Nanjing BYabs science technology Co.,Ltd

网址: www.njbybio.com

官方热线: 025-5229-8998

监督电话: 15950492658