



S36A2 mouse mAb

Catalog No	BYmab-12152
Isotype	IgG
Reactivity	Human; Mouse;Rat
Applications	WB
Gene Name	SLC36A2 PAT2 TRAMD1
Protein Name	S36A2
Immunogen	Synthesized peptide derived from human S36A2 AA range: 130-180
Specificity	This antibody detects endogenous levels of S36A2 at Human/Mouse/Rat
Formulation	Liquid in PBS containing 50% glycerol, 0.5% BSA and 0.02% sodium azide.
Source	Monoclonal, Mouse,IgG
Purification	The antibody was affinity-purified from mouse antiserum by affinity-chromatography using epitope-specific immunogen.
Dilution	WB 1:500-2000
Concentration	1 mg/ml
Purity	≥90%
Storage Stability	-20°C/1 year
Synonyms	
Observed Band	
Cell Pathway	Cell membrane ; Multi-pass membrane protein . Endoplasmic reticulum membrane . Recycling endosome membrane .
Tissue Specificity	Abundantly expressed in kidney and muscle. Expressed in the S1 segment of the proximal tubule close to the glomerulus.
Function	function:Involved in a pH-dependent electrogenic neuronal transport and sequestration of small amino acids amino acids such as glycine, alanine and proline. Inhibited by sarcosine.,similarity:Belongs to the amino acid/polyamine transporter 2 family.,tissue specificity:Abundantly expressed in kidney and muscle.,
Background	This gene encodes a pH-dependent proton-coupled amino acid transporter that belongs to the amino acid auxin permease 1 protein family. The encoded protein primarily transports small amino acids such as glycine, alanine and proline. Mutations in this gene are associated with iminoglycinuria and hyperglycinuria. [provided by RefSeq, Sep 2010],

Nanjing BYabscience technology Co.,Ltd



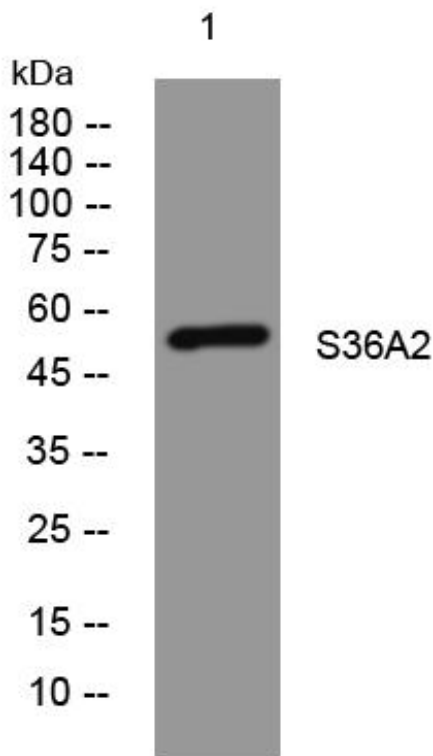
matters needing attention

Avoid repeated freezing and thawing!

Usage suggestions

This product can be used in immunological reaction related experiments. For more information, please consult technical personnel.

Products Images



Western Blot analysis of various cells using S36A2 mouse mAb

Nanjing BYabs science technology Co.,Ltd

网址: www.njbybio.com

官方热线: 025-5229-8998

监督电话: 15950492658