



LR16A mouse mAb

Catalog No	BYmab-12126
Isotype	IgG
Reactivity	Human; Mouse
Applications	WB
Gene Name	LRRC16A CARMIL LRRC16
Protein Name	LR16A
Immunogen	Synthesized peptide derived from human LR16A AA range: 853-903
Specificity	This antibody detects endogenous levels of LR16A at Human/Mouse
Formulation	Liquid in PBS containing 50% glycerol, 0.5% BSA and 0.02% sodium azide.
Source	Monoclonal, Mouse,IgG
Purification	The antibody was affinity-purified from mouse antiserum by affinity-chromatography using epitope-specific immunogen.
Dilution	WB 1:500-2000
Concentration	1 mg/ml
Purity	≥90%
Storage Stability	-20°C/1 year
Synonyms	
Observed Band	
Cell Pathway	Cytoplasm . Cytoplasm, cytoskeleton . Cell membrane . Cell projection, lamellipodium . Found on macropinosomes (PubMed:19846667). Colocalized with heterodimeric capping protein (CP) and F-actin in lamellipodia but not with F-actin in stress fibers (PubMed:19846667). .
Tissue Specificity	Expressed in lung, placenta, small intestine, liver, thymus, colon, skeletal muscle, heart and brain. Higher expression in kidney.
Function	function: Binds CAPZA2 with high affinity and significantly decreases CAPZA2 affinity for actin barbed ends. Increases the rate of elongation from seeds in the presence of CAPZA2, however, seems unable to nucleate filaments. Rapidly uncaps barbed ends capped by CAPZA2 and enhances barbed-end actin polymerization.,similarity: Belongs to the CARMIL family.,similarity: Contains 11 LRR (leucine-rich) repeats.,subcellular location: Colocalized with F-actin in lamellipodia but not with F-actin in stress fibers.,subunit: Interacts via its C-terminus with CAPZA2 in cytoplasm; interaction is essential for lamellipodial protrusion and cell translocation.,tissue specificity: Expressed in lung, placenta,

Nanjing BYabscience technology Co.,Ltd



small intestine, liver, thymus, colon, skeletal muscle, heart and brain. Higher expression in kidney.,

Background

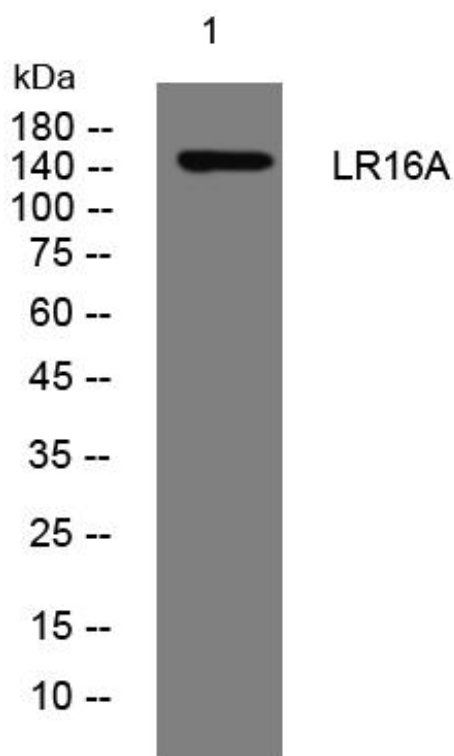
matters needing attention

Avoid repeated freezing and thawing!

Usage suggestions

This product can be used in immunological reaction related experiments. For more information, please consult technical personnel.

Products Images



Western Blot analysis of various cells using LR16A mouse mAb

Nanjing BYabscience technology Co.,Ltd

网址: www.njbybio.com

官方热线: 025-5229-8998

监督电话: 15950492658