



IDI1 mouse mAb

Catalog No	BYmab-12110
Isotype	IgG
Reactivity	Human; Mouse;Rat
Applications	WB
Gene Name	IDI1
Protein Name	IDI1
Immunogen	Synthesized peptide derived from human IDI1 AA range: 103-153
Specificity	This antibody detects endogenous levels of IDI1 at Human/Mouse/Rat
Formulation	Liquid in PBS containing 50% glycerol, 0.5% BSA and 0.02% sodium azide.
Source	Monoclonal, Mouse,IgG
Purification	The antibody was affinity-purified from mouse antiserum by affinity-chromatography using epitope-specific immunogen.
Dilution	WB 1:500-2000
Concentration	1 mg/ml
Purity	≥90%
Storage Stability	-20°C/1 year
Synonyms	
Observed Band	
Cell Pathway	Peroxisome .
Tissue Specificity	
Function	catalytic activity:Isopentenyl diphosphate = dimethylallyl diphosphate.,cofactor:binds 1 magnesium ion per subunit.,function:Catalyzes the 1,3-allylic rearrangement of the homoallylic substrate isopentenyl (IPP) to its highly electrophilic allylic isomer, dimethylallyl diphosphate (DMAPP).,pathway:Isoprenoid biosynthesis; dimethylallyl-PP biosynthesis; dimethylallyl-PP from isopentenyl-PP: step 1/1.,similarity:Belongs to the IPP isomerase type 1 family.,subunit:Monomer.,
Background	IDI1 encodes a peroxisomally-localized enzyme that catalyzes the interconversion of isopentenyl diphosphate (IPP) to its highly electrophilic isomer, dimethylallyl diphosphate (DMAPP), which are the substrates for the successive reaction that results in the synthesis of farnesyl diphosphate and, ultimately, cholesterol. It

Nanjing BYabscience technology Co.,Ltd



has been shown in peroxisomal deficiency diseases such as Zellweger syndrome and neonatal adrenoleukodystrophy that there is reduction in IPP isomerase activity. [provided by RefSeq, Jul 2008],

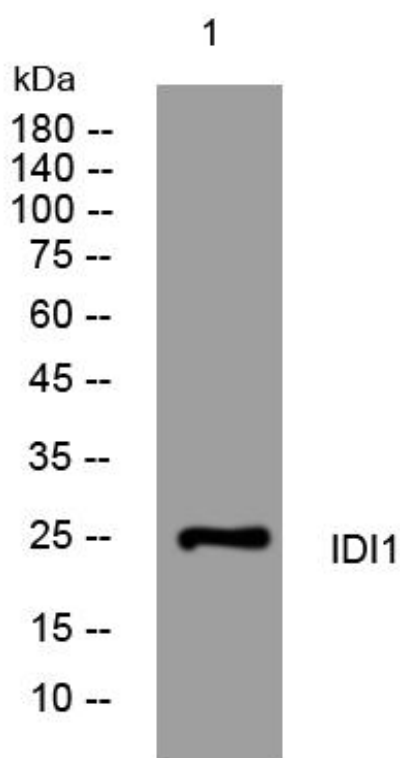
matters needing attention

Avoid repeated freezing and thawing!

Usage suggestions

This product can be used in immunological reaction related experiments. For more information, please consult technical personnel.

Products Images



Western Blot analysis of various cells using IDI1 mouse mAb