



WDR47 mouse mAb

Catalog No	BYmab-12093
Isotype	IgG
Reactivity	Human; Mouse
Applications	WB
Gene Name	WDR47 KIAA0893
Protein Name	WDR47
Immunogen	Synthesized peptide derived from human WDR47 AA range: 474-524
Specificity	This antibody detects endogenous levels of WDR47 at Human/Mouse
Formulation	Liquid in PBS containing 50% glycerol, 0.5% BSA and 0.02% sodium azide.
Source	Monoclonal, Mouse,IgG
Purification	The antibody was affinity-purified from mouse antiserum by affinity-chromatography using epitope-specific immunogen.
Dilution	WB 1:500-2000
Concentration	1 mg/ml
Purity	≥90%
Storage Stability	-20°C/1 year
Synonyms	
Observed Band	
Cell Pathway	Cytoplasm, cytoskeleton . Localization along microtubules is mediated by MAP1S. .
Tissue Specificity	
Function	caution:The sequence shown here is derived from an Ensembl automatic analysis pipeline and should be considered as preliminary data.,similarity:Contains 1 CTLH domain.,similarity:Contains 1 LisH domain.,similarity:Contains 7 WD repeats.,
Background	
matters needing attention	Avoid repeated freezing and thawing!

Nanjing BYabscience technology Co.,Ltd

网址: www.njbybio.com

官方热线: 025-5229-8998

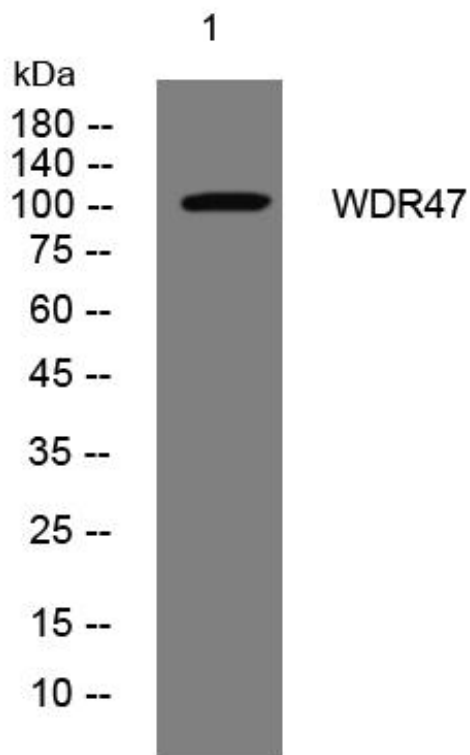
监督电话: 15950492658



Usage suggestions

This product can be used in immunological reaction related experiments. For more information, please consult technical personnel.

Products Images



Western Blot analysis of various cells using WDR47 mouse mAb

Nanjing BYabs science technology Co.,Ltd

网址: www.njbybio.com

官方热线: 025-5229-8998

监督电话: 15950492658