



# SASH1 mouse mAb

Catalog No	BYmab-12061
Isotype	IgG
Reactivity	Human; Mouse
Applications	WB
Gene Name	SASH1 KIAA0790 PEPE1
Protein Name	SASH1
Immunogen	Synthesized peptide derived from human SASH1 AA range: 373-423
Specificity	This antibody detects endogenous levels of SASH1 at Human/Mouse
Formulation	Liquid in PBS containing 50% glycerol, 0.5% BSA and 0.02% sodium azide.
Source	Monoclonal, Mouse,IgG
Purification	The antibody was affinity-purified from mouse antiserum by affinity-chromatography using epitope-specific immunogen.
Dilution	WB 1:500-2000
Concentration	1 mg/ml
Purity	≥90%
Storage Stability	-20°C/1 year
Synonyms	
Observed Band	
Cell Pathway	Cytoplasm .
Tissue Specificity	Expressed ubiquitously, with highest levels in lung, placenta, spleen and thymus. Down-regulated in the majority (74%) of breast tumors in comparison with corresponding normal breast epithelial tissues. Expressed in the epidermis, epidermal keratinocytes, dermal fibroblasts and melanocytes (PubMed:23333244, PubMed:26203640).
Function	function:May have a role in a signaling pathway. Could act as a tumor suppressor.,similarity:Contains 1 SH3 domain.,similarity:Contains 2 SAM (sterile alpha motif) domains.,tissue specificity:Expressed ubiquitously, with highest levels in lung, placenta, spleen and thymus. Down-regulated in the majority (74%) of breast tumors in comparison with corresponding normal breast epithelial tissues.,
Background	

Nanjing BYabscience technology Co.,Ltd



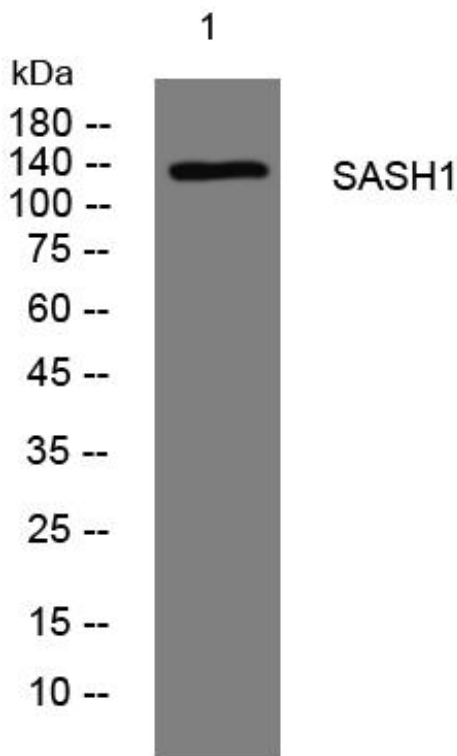
**matters needing attention**

Avoid repeated freezing and thawing!

**Usage suggestions**

This product can be used in immunological reaction related experiments. For more information, please consult technical personnel.

## Products Images



Western Blot analysis of various cells using SASH1 mouse mAb