



LMOD2 mouse mAb

| | |
|--------------------|--|
| Catalog No | BYmab-12059 |
| Isotype | IgG |
| Reactivity | Human; Mouse;Rat |
| Applications | WB |
| Gene Name | LMOD2 |
| Protein Name | LMOD2 |
| Immunogen | Synthesized peptide derived from human LMOD2 AA range: 279-329 |
| Specificity | This antibody detects endogenous levels of LMOD2 at Human/Mouse/Rat |
| Formulation | Liquid in PBS containing 50% glycerol, 0.5% BSA and 0.02% sodium azide. |
| Source | Monoclonal, Mouse,IgG |
| Purification | The antibody was affinity-purified from mouse antiserum by affinity-chromatography using epitope-specific immunogen. |
| Dilution | WB 1:500-2000 |
| Concentration | 1 mg/ml |
| Purity | ≥90% |
| Storage Stability | -20°C/1 year |
| Synonyms | |
| Observed Band | |
| Cell Pathway | Cytoplasm, myofibril, sarcomere . Cytoplasm, myofibril . Cytoplasm, myofibril, sarcomere, M line . Cytoplasm, cytoskeleton . Colocalizes with actin filaments in sarcomeres. Detected close to the M line. . |
| Tissue Specificity | Specifically expressed in heart and skeletal muscles, with higher levels in heart (at protein level). Not expressed in other tissues. |
| Function | function:May block the elongation and depolymerization of the actin filaments at the pointed end.,sequence caution:Translation N-terminally shortened.,similarity:Belongs to the tropomodulin family.,similarity:Contains 1 WH2 domain.,subunit:Able to bind to tropomyosin.,tissue specificity:Specifically expressed in heart and skeletal muscles. Not expressed in other tissues., |
| Background | |

Nanjing BYabscience technology Co.,Ltd

网址: www.njbybio.com

官方热线: 025-5229-8998

监督电话: 15950492658



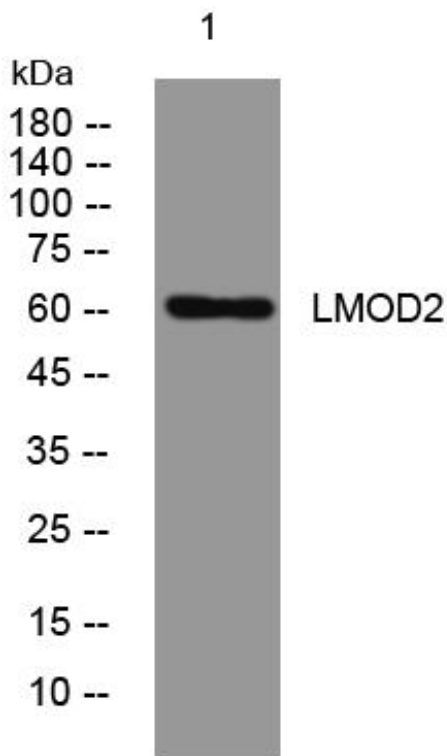
matters needing attention

Avoid repeated freezing and thawing!

Usage suggestions

This product can be used in immunological reaction related experiments. For more information, please consult technical personnel.

Products Images



Western Blot analysis of various cells using LMOD2 mouse mAb

Nanjing BYabs science technology Co.,Ltd

网址: www.njbybio.com

官方热线: 025-5229-8998

监督电话: 15950492658