



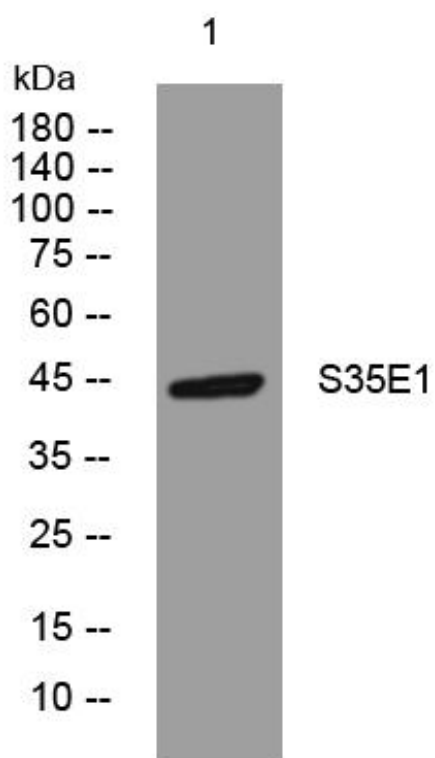
S35E1 mouse mAb

Catalog No	BYmab-12057
Isotype	IgG
Reactivity	Human; Mouse;Rat
Applications	WB
Gene Name	SLC35E1 PSEC0038
Protein Name	S35E1
Immunogen	Synthesized peptide derived from human S35E1 AA range: 257-307
Specificity	This antibody detects endogenous levels of S35E1 at Human/Mouse/Rat
Formulation	Liquid in PBS containing 50% glycerol, 0.5% BSA and 0.02% sodium azide.
Source	Monoclonal, Mouse,IgG
Purification	The antibody was affinity-purified from mouse antiserum by affinity-chromatography using epitope-specific immunogen.
Dilution	WB 1:500-2000
Concentration	1 mg/ml
Purity	≥90%
Storage Stability	-20°C/1 year
Synonyms	
Observed Band	
Cell Pathway	Membrane ; Multi-pass membrane protein .
Tissue Specificity	
Function	function:Putative transporter.,similarity:Belongs to the TPT transporter family. SLC35E subfamily.,
Background	
matters needing attention	Avoid repeated freezing and thawing!
Usage suggestions	This product can be used in immunological reaction related experiments. For more information, please consult technical personnel.

Nanjing BYabscience technology Co.,Ltd



Products Images



Western Blot analysis of various cells using S35E1 mouse mAb

Nanjing BYabs science technology Co.,Ltd

网址: www.njbybio.com

官方热线: 025-5229-8998

监督电话: 15950492658