



FBLI1 mouse mAb

Catalog No	BYmab-12055
Isotype	IgG
Reactivity	Human; Mouse
Applications	WB
Gene Name	FBLIM1 FBLP1
Protein Name	FBLI1
Immunogen	Synthesized peptide derived from human FBLI1 AA range: 157-207
Specificity	This antibody detects endogenous levels of FBLI1 at Human/Mouse
Formulation	Liquid in PBS containing 50% glycerol, 0.5% BSA and 0.02% sodium azide.
Source	Monoclonal, Mouse,IgG
Purification	The antibody was affinity-purified from mouse antiserum by affinity-chromatography using epitope-specific immunogen.
Dilution	WB 1:500-2000
Concentration	1 mg/ml
Purity	≥90%
Storage Stability	-20°C/1 year
Synonyms	
Observed Band	
Cell Pathway	Cell junction, focal adhesion . Cytoplasm, cytoskeleton, stress fiber . Associated with actin stress fiber at cell-ECM focal adhesion sites (PubMed:12679033, PubMed:18829455). Isoform 1 and isoform 3 are recruited and localized at actin stress fibers and clustered at cell-EMC adhesion sites through interaction with FERMT2 (PubMed:12679033). Isoform 2 is localized at actin stress fibers (PubMed:12496242). .
Tissue Specificity	Isoform 1 and isoform 3 are expressed in heart, kidney, lung, pancreas, placenta and platelets. Isoform 2 is expressed in brain, heart, kidney, lung, pancreas, placenta, skeletal muscle and platelets.
Function	function:Serves as an anchoring site for cell-ECM adhesion proteins and filamin-containing actin filaments. Is implicated in cell shape modulation (spreading) and motility. May participate in the regulation of filamin-mediated cross-linking and stabilization of actin filaments. May also regulate the assembly of filamin-containing signaling complexes that control actin assembly.,similarity:Contains 3 LIM zinc-binding domains.,subcellular

Nanjing BYabscience technology Co.,Ltd



location:Associated with actin stress fiber at cell-ECM focal adhesion sites. Isoform 1 and isoform 3 are recruited and localized at actin stress fibers and clustered at cell-ECM adhesion sites through interaction with PLEKHC1. Isoform 2 is localized at actin stress fibers.,subunit:Isoform 1 and isoform 3 interact with PLEKHC1, FLNA and FLNC. Isoform 2 interacts with FLNB. Interacts with NKX2-5.,tissue specificity:Isoform 1 and isoform 3 are expressed in

Background

This gene encodes a protein with an N-terminal filamin-binding domain, a central proline-rich domain, and, multiple C-terminal LIM domains. This protein localizes at cell junctions and may link cell adhesion structures to the actin cytoskeleton. This protein may be involved in the assembly and stabilization of actin-filaments and likely plays a role in modulating cell adhesion, cell morphology and cell motility. This protein also localizes to the nucleus and may affect cardiomyocyte differentiation after binding with the CSX/NKX2-5 transcription factor. Alternative splicing results in multiple transcript variants encoding different isoforms. [provided by RefSeq, Jul 2008],

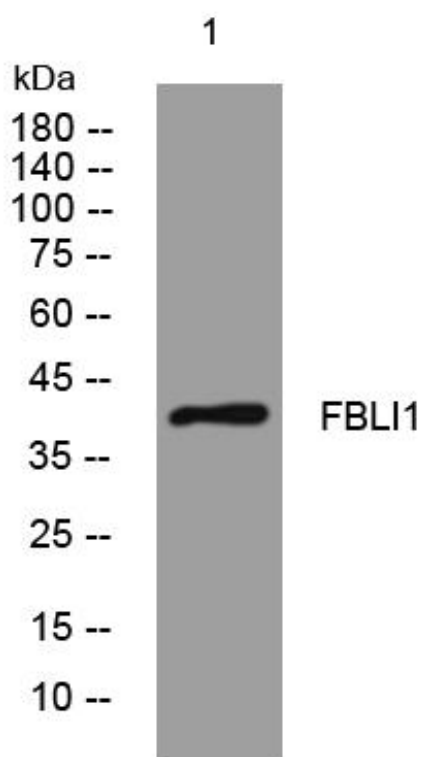
matters needing attention

Avoid repeated freezing and thawing!

Usage suggestions

This product can be used in immunological reaction related experiments. For more information, please consult technical personnel.

Products Images



Western Blot analysis of various cells using FBLI1 mouse mAb