



RAB3A mouse mAb

Catalog No	BYmab-12052
Isotype	IgG
Reactivity	Human; Mouse;Rat
Applications	WB
Gene Name	RAB3A
Protein Name	RAB3A
Immunogen	Synthesized peptide derived from human RAB3A AA range: 27-77
Specificity	This antibody detects endogenous levels of RAB3A at Human/Mouse/Rat
Formulation	Liquid in PBS containing 50% glycerol, 0.5% BSA and 0.02% sodium azide.
Source	Monoclonal, Mouse,IgG
Purification	The antibody was affinity-purified from mouse antiserum by affinity-chromatography using epitope-specific immunogen.
Dilution	WB 1:500-2000
Concentration	1 mg/ml
Purity	≥90%
Storage Stability	-20°C/1 year
Synonyms	
Observed Band	
Cell Pathway	Cytoplasm, cytosol . Lysosome . Cytoplasmic vesicle, secretory vesicle . Cell projection, axon . Cell membrane ; Lipid-anchor ; Cytoplasmic side . Cell junction, synapse, presynapse . Cell junction, synapse, postsynapse . Cycles between a vesicle-associated GTP-bound form and a cytosolic GDP-bound form. .
Tissue Specificity	Specifically expressed in brain.
Function	function:Involved in exocytosis by regulating a late step in synaptic vesicle fusion. Could play a role in neurotransmitter release by regulating membrane flow in the nerve terminal.,similarity:Belongs to the small GTPase superfamily. Rab family.,subunit:Heterodimer with RIMS2. Part of a ternary complex involving PCLO and EPAC2. Interacts with RPH3A. Interacts with the exocyst complex through SEC15. Binds SYTL4, RIMS1 and RIMS2. Interacts with RAB3IP. Interacts with SGSM1 and SGSM3.,tissue specificity:Specifically expressed in brain.,

Nanjing BYabscience technology Co.,Ltd

网址: www.njbybio.com

官方热线: 025-5229-8998

监督电话: 15950492658



Background

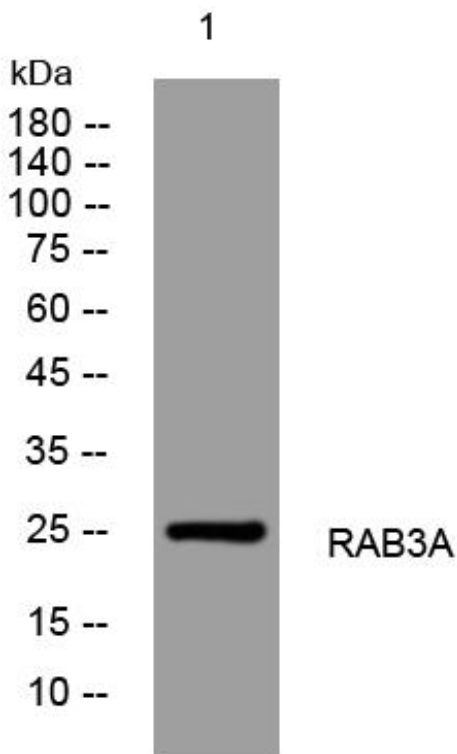
matters needing attention

Avoid repeated freezing and thawing!

Usage suggestions

This product can be used in immunological reaction related experiments. For more information, please consult technical personnel.

Products Images



Western Blot analysis of various cells using RAB3A mouse mAb